

Reports in the Miscellaneous Folder

Report Name

Alcar for Windows 2.0 Combined Data Statement - 10 Years

Alcar for Windows 2.0 Combined Data Statement - 5 Years

Company Description

Company Highlights

Pension Plan

Report File Name

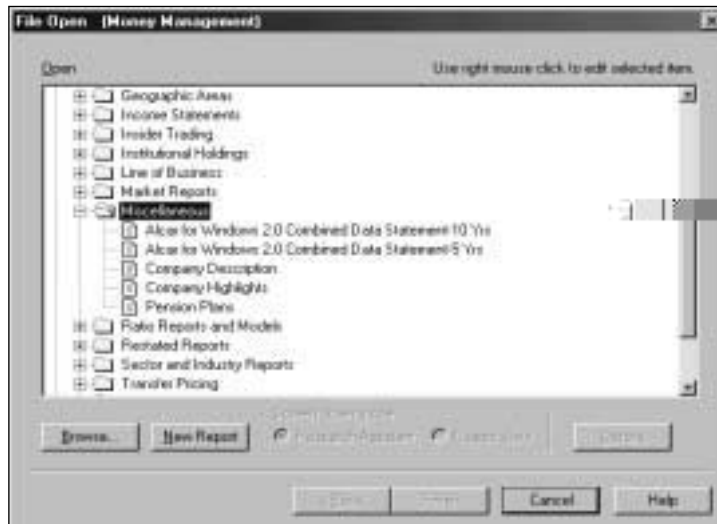
AFWCD10

AFWCD5

CDESC

CFINLHI

CPENSION



Alcar for Windows 2.0 Combined Data Statement - 10 Years (ALCAR)

Description

This report provides Alcar® subscribers an export file of ten years of COMPUSTAT data for use in Alcar for Windows products.

#AFW Alcar Formatted ASCII File#

#comment

#delimiter=Tab

#format=number

#time	1990	1991	1992	1993	1994	1995	1996	1997	1998	1999
1.0.200	DOW CHEMICAL									
3460.0	809.970	812.124	817.767	823.458	831.369	752.871	723.417	676.404	661.131	669.846
3460.5	809.697	811.431	814.941	820.860	828.282	804.729	738.987	691.800	670.500	660.300
1000.0	19804.000	18827.000	18992.000	18086.000	20040.000	20223.000	20079.000	20065.000	18473.000	18974.000
1040.0	11865.000	11355.000	11362.000	10852.000	11898.000	11968.000	12849.000	13471.000	12491.000	13180.000
1080.0	3859.000	4061.000	4412.000	4164.000	4322.000	2995.000	2897.000	2665.000	2473.000	2375.000
1110.0	1170.000	1306.000	1342.000	1343.000	1321.000	1369.000	1259.000	1208.000	1188.000	1122.000
2410.3	126.000	129.000	147.000	179.000	169.000	38.000	39.000	61.000	88.000	146.000
1220.0	123.000	128.000	109.000	167.000	131.000	NA	NA	182.000	139.000	121.000
1360.0	824.000	799.000	851.000	732.000	669.000	490.000	564.000	533.000	587.000	537.000
1410.0	84.000	95.000	78.000	66.000	66.000	28.000	35.000	31.000	47.000	53.000
1180.0	0.000	157.000	433.000	180.000	0.000	0.000	0.000	NA	111.000	100.000
2420.3	143.000	118.000	71.000	-111.000	63.000	70.000	66.000	75.000	64.000	82.000
1720.0	201.000	236.000	322.000	275.000	335.000	196.000	194.000	99.000	17.000	69.000
1160.0	253.000	327.000	169.000	767.000	131.000	68.000	716.000	533.000	227.000	396.000
1610.0	978.000	510.000	274.000	606.000	779.000	1442.000	1187.000	1041.000	685.000	766.000
1730.0	0.000	0.000	-765.000	0.000	0.000	187.000	0.000	0.000	0.000	0.000
1800.0	6.000	7.000	7.000	7.000	7.000	7.000	7.000	6.000	6.000	5.000
1880.0	702.000	703.000	707.000	712.000	719.000	769.000	736.000	768.000	774.000	768.000
3430.0	19.656	24.909	24.996	15.255	14.721	14.925	15.228	12.600	11.400	12.900
2000.0	204.000	236.000	375.000	407.000	569.000	2839.000	1903.000	235.000	123.000	506.000
2010.0	95.000	300.000	231.000	430.000	565.000	611.000	399.000	302.000	267.000	706.000
2020.0	4621.000	4310.000	3825.000	3925.000	4562.000	4162.000	4467.000	5031.000	4630.000	4721.000
2030.0	83.000	95.000	95.000	93.000	104.000	53.000	71.000	73.000	93.000	107.000
2040.0	3182.000	2968.000	2692.000	2526.000	2712.000	2748.000	2815.000	2921.000	2810.000	2786.000
2060.0	0.000	0.000	0.000	0.000	0.000	0.000	0.000	0.000	0.000	0.000
2090.0	0.000	0.000	415.000	457.000	389.000	247.000	317.000	224.000	303.000	235.000
2170.0	18610.000	20114.000	20869.000	21040.000	23210.000	23218.000	23737.000	23345.000	24435.000	24276.000
2190.0	10900.000	11888.000	12643.000	13028.000	14484.000	15105.000	15253.000	15293.000	15988.000	15786.000
2390.0	539.000	549.000	575.000	568.000	NA	NA	NA	NA	NA	NA
2410.0	4190.000	4310.000	4395.000	4442.000	4414.000	723.000	899.000	1762.000	1641.000	1834.000
2420.0	1156.000	1248.000	1417.000	1019.000	931.000	848.000	1387.000	1206.000	1311.000	1359.000
2430.0	1755.000	2020.000	1923.000	2095.000	1859.000	1872.000	2497.000	2929.000	2615.000	3262.000
2440.0	584.000	655.000	1381.000	1717.000	1922.000	1472.000	1576.000	1451.000	1776.000	1707.000
2500.0	1874.000	1653.000	1500.000	1479.000	1928.000	1529.000	1596.000	1731.000	1682.000	1782.000
2510.0	239.000	351.000	591.000	165.000	534.000	375.000	607.000	406.000	300.000	343.000
2520.0	1194.000	1222.000	687.000	877.000	741.000	323.000	665.000	1656.000	1526.000	692.000
2530.0	275.000	324.000	218.000	245.000	664.000	791.000	567.000	521.000	290.000	178.000
2590.0	2172.000	2585.000	2645.000	2885.000	2751.000	2583.000	2569.000	3026.000	3044.000	3300.000
2660.0	5209.000	6079.000	6191.000	5902.000	5303.000	4705.000	4196.000	4196.000	4051.000	5022.000
2770.0	698.000	529.000	214.000	372.000	644.000	659.000	1005.000	649.000	747.000	839.000
2780.0	726.000	1000.000	2036.000	2439.000	2506.000	1775.000	2091.000	676.000	532.000	908.000
2790.0	2838.000	1539.000	3204.000	3091.000	3240.000	3140.000	3389.000	3504.000	4186.000	4062.000
2820.0	0.000	4.000	10.000	16.000	22.000	28.000	34.000	49.000	43.000	50.000
2830.0	-466.000	-671.000	-547.000	-412.000	-294.000	-2511.000	-3176.000	-4585.000	-5111.000	-4871.000
3550.0	76.100	81.093	92.746	86.632	80.370	70.771	69.173	82.704	79.688	73.375

Alcar for Windows 2.0 Combined Data Statement - 5 Years (ALCAR)

Description

This report provides Alcar

```
#AFW Alcar Formatted ASCII File#
#comment
#delimiter=Tab
#format=number
#time
1.0.200      ELECTRONIC ARTS INC
3460.0      52.742    54.163    60.160    61.169    70.435
3460.5      54.163    55.483    58.867    60.748    62.830
1000.0      531.887   624.766   908.852   1221.863  1420.011
1040.0      258.475   291.237   453.859   590.966   671.072
1080.0      204.762   245.400   332.345   441.043   541.889
1110.0      15.119    20.807    26.215    34.581    34.736
2410.3      NA        NA        0.692     5.880     11.989
1220.0      6.444     8.059     13.649    12.625    13.744
1360.0      0.141     0.066     0.389     NA        NA
1410.0      0.000     0.000     0.000     0.000     0.000
1180.0      4.700     0.000     -0.333    44.115    6.539
2420.3      -1.746    -1.566    -1.162    -0.155    1.138
1720.0      0.304     -1.282    -0.028    0.172     0.421
1160.0      6.164     5.212     0.088     0.710     1.146
1610.0      18.759    27.241    35.726    45.414    52.642
1730.0      0.000     0.000     0.000     0.000     0.000
1800.0      0.000     0.000     0.000     0.000     0.000
1880.0      0.000     0.000     0.000     0.000     0.000
3430.0      NA        NA        2.091     2.524     3.541
2000.0      105.628   125.609   215.963   242.208   339.804
2010.0      80.224    110.035   162.318   75.498    0.236
2020.0      73.075    95.356    139.374   149.468   234.087
2030.0      NA        NA        NA        NA        NA
2040.0      14.704    15.847    19.626    22.376    22.986
2060.0      14.519    10.311    20.470    0.000     0.000
2090.0      12.188    11.885    32.060    79.915    108.210
2170.0      108.812   142.589   186.462   271.171   406.601
2190.0      38.750    57.457    81.367    89.905    121.135
2390.0      NA        NA        NA        NA        NA
2410.0      NA        NA        1.585     90.682    117.236
2420.0      15.952    25.657    20.541    25.864    22.601
2430.0      24.200    24.200    24.200    18.400    8.400
2440.0      13.667    12.671    4.449     16.196    53.286
2500.0      37.019    41.560    56.233    63.881    97.703
2510.0      0.000     0.000     0.000     0.000     0.000
2520.0      0.000     0.000     0.000     0.000     0.000
2530.0      10.477    12.611    26.095    23.724    22.682
2590.0      53.129    73.259    99.385    148.604   144.917
2660.0      0.000     0.000     0.000     0.000     0.000
2770.0      0.000     0.000     0.000     0.000     0.000
2780.0      1.277     0.028     0.000     2.733     3.617
2790.0      0.000     0.000     0.000     0.000     0.000
2820.0      0.000     0.000     0.000     0.000     0.000
2830.0      108.605   136.052   234.896   263.386   413.386
3550.0      0.000     0.000     0.000     0.000     0.000
2420.2      NA        0.000     0.000     0.000     0.000
2190.1      15.119    20.807    26.215    34.581    34.736
2170.1      56.830    36.212    45.238    115.820   134.884
3020.0      -13.803   13.521    -3.317    2.399     6.289
5.0.520      NA
```

Company Description (CDESC)

Description

This report presents address, officers, industry and shareholder data, and selected descriptive information for a company.

COMPANY DESCRIPTION	
MICROSOFT CORP ONE MICROSOFT WAY REDMOND WA 98052-6399 425-882-8080	Ticker: MSFT Cusip: 594918104 NASDAQ Publicly Traded Company Common Shareholders (Thou): 92 Common Shares Outstanding: 5,262,402 Beta: 1.7 Close Price For Jul00 69.81
SIC: 7372 Industry: PREPACKAGED SOFTWARE	Current Debt Ratings: S&P LT Issuer Credit Rating: AA S&P ST Issuer Credit Rating:
Fiscal Year: June Latest Annual Update: Y99 Latest Quarterly Update: Q4Y00	Auditor: Deloitte & Touche Auditor's Opinion: Unqualified Opinion
Industry Group Memberships: S&P 500 @NA @NA Fortune 500	
Top Company Officers: WILLIAM H. GATES ROBERT J. HERBOLD JOHN CONNORS STEVEN A. BALLMER	Title: CHAIRMAN, CHIEF SOFTWARE ARCHITECT EXECUTIVE VICE PRESIDENT, CHIEF OPERATING OFFICER CHIEF FINANCE OFFICER, SENIOR VP PRESIDENT, CHIEF EXECUTIVE OFFICER

Company Highlights (CFINLHI)

Description

This report presents a company's basic financial and market information.

COMPANY HIGHLIGHTS									
DU PONT (E I) DE NEMOURS				Ticker: DD Issue Description: COM USD1.66 CUSIP: 263534109 New York Stock Exchange Common Shareholders (Thou): 140 Publicly Traded Company					
1007 Market St									
Wilmington DE 19898-0001									
302-774-1000									
Industry: Chemicals									
Valuation		Relative*		12 MM		% Chg.		Latest	
Price/Earnings	215.8	757%	High	50.69	Sales	29,106.000	14.3%	Assets	40,237.000
Price/Book	3.6	51%	Low	42.88	EBITDA	5,299.000		Debt	11,643.000
Price/Sales	1.6		Close	50.25	Net Income	236.000	-86.0%	Equity	13,010.000
Dividend	1.40		Return	-35.6%	EPS	0.210	-85.9%	Shares Out	1,042.419
Yield	3.1	272%	Beta	0.8	EPS-Estimate	3.000		Market Value	52,627.429
S&P Ratings				Industry Group Memberships:				Misc.	
LT Issuer Credit Rating	AA-		S&P 500				Employees	94.000	
ST Issuer Credit Rating	Greatest (A1+)		S&P Industrials				ROE	1.7	
Common Stock Average	(B+)		Fortune 500				ROA	0.6	
							Debt/Equity	51.0	
Latest Updates									
Annual:	1999	Quarterly:	Q2Y00	Monthly:	Jul00	Daily:	17Aug00	Fiscal Year:	December
* Relative to the S&P 500									

Pension Plan (CPENSION)

Description

This report presents a synopsis of a company's pension plan for a single year.

UAL CORP		PENSION PLAN	
TICKER: UAL			
FISCAL YEAR ENDED: Dec97			
	OVERFUNDED PLANS	UNDERFUNDED PLANS	
Funded Status of Pension Plans:			
Vested Benefit Obligation	5,263.000	1,273.000	
Accumulated Benefit Obligation	5,263.000	1,273.000	
Projected Benefit Obligation	5,792.000	1,481.000	
Plan Assets	5,950.000	908.000	
Over/Under Funded Assets	158.000	-573.000	
Unrecognized Prior Service Cost	159.000	489.000	
Additional Minimum Liability	@NA	289.000	
Other Adjustments	21.000	9.000	
Prepaid/Accrued Costs	338.000	-364.000	
Assumptions Used for Pension Plans:			
Discount Rate	7.2%		
Compensation Increase	3.8%		
Long-Term Rate of Return	9.8%		
Net Pension Cost (Credit):			
Service Cost - Earned During Year	232.000		
Interest Cost	477.000		
Return on Assets	-1,078.000		
Other costs	585.000		
Net Pension Cost (Credit)	216.000		