

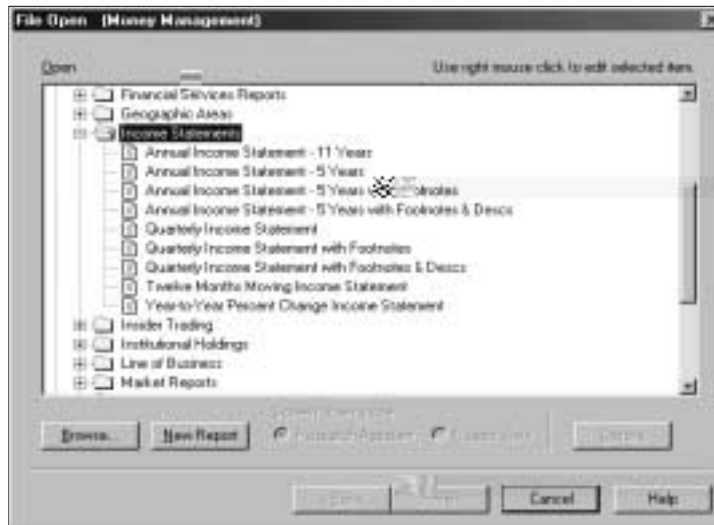
## Reports in the Income Statement Folder

### Report Name

Annual Income Statement - 11 Years  
 Annual Income Statement - 5 Years  
 Annual Income Statement - 5 Years with Footnotes  
 Annual Income Statement - 5 Years with Footnotes and Descriptions  
 Quarterly Income Statement  
 Quarterly Income Statement with Footnotes  
 Quarterly Income Statement with Footnotes and Descriptions  
 Twelve Months Moving Income Statement  
 Year-to-Year Percent Change Income Statement

### Report File Name

CIS11  
 CIS5  
 CISF  
 CISFD  
 CISQ  
 CISQF  
 CISQFD  
 CIS12MM  
 CISG



## Annual Income Statement - 11 Years (CIS11)

## Description

This report presents eleven years of income statement data for a single company.

INTL BUSINESS MACHINES CORP  
TICKER: IBM  
SIC: 3570  
GICS: 45202010

ANNUAL INCOME STATEMENT  
(\$ MILLIONS, EXCEPT PER SHARE)

	Dec99	Dec98	Dec97	Dec96	Dec95
Sales	87,548.000	81,667.000	78,508.000	75,947.000	71,940.000
Cost of Goods Sold	49,460.000	46,320.000	43,881.000	41,732.000	37,618.000
Gross Profit	38,088.000	35,347.000	34,627.000	34,215.000	34,322.000
Selling, General, & Administrative Expense	21,854.000	21,708.000	21,511.000	21,508.000	20,448.000
Operating Income Before Deprec. Depreciation, Depletion, & Amortization	16,234.000	13,639.000	13,116.000	12,707.000	13,874.000
Operating Profit	10,075.000	9,164.000	9,098.000	9,031.000	9,919.000
Interest Expense	750.000	741.000	760.000	747.000	748.000
Non-Operating Income/Expense	580.000	617.000	689.000	738.000	970.000
Special Items	1,852.000	0.000	0.000	-435.000	-2,328.000
Pretax Income	11,757.000	9,040.000	9,027.000	8,587.000	7,813.000
Total Income Taxes	4,045.000	2,712.000	2,934.000	3,158.000	3,635.000
Minority Interest	@CF	@CF	@CF	@CF	@CF
Income Before Extraordinary Items & Discontinued Operations	7,712.000	6,328.000	6,093.000	5,429.000	4,178.000
Preferred Dividends	20.000	20.000	20.000	20.000	62.000
Available for Common Savings Due to Common Stock Equivalents	7,692.000	6,308.000	6,073.000	5,409.000	4,116.000
Adjusted Available for Common Extraordinary Items	7,692.000	6,308.000	6,073.000	5,409.000	4,116.000
Discontinued Operations	0.000	0.000	0.000	0.000	0.000
Adjusted Net Income	7,692.000	6,308.000	6,073.000	5,409.000	4,116.000
Earnings Per Share Basic - Excluding Extra Items & Disc Op	4.25	3.38	3.09	2.56	1.81
Earnings Per Share Basic - Including Extra Items & Disc Op	4.25	3.38	3.09	2.56	1.81
Earnings Per Share Diluted- Excluding Extra Items & Disc Op	4.12	3.29	3.01	2.51	1.76
Earning Per Share Diluted - Including Extra Items & Disc Op	4.12	3.29	3.01	2.51	1.76
EPS Basic from Operations	3.84	3.38	3.09	2.76	2.76
EPS Diluted from Ops	3.71	3.29	3.01	@NA	@NA
Dividends Per Share(g 09)-7872.23.01	@NA	@NA			

Dec94	Dec93	Dec92	Dec91	Dec90	Dec89
64,052.000	62,716.000	64,523.000	64,792.000	69,018.000	62,710.000
34,571.000	32,790.000	25,848.000	27,325.000	26,506.000	23,461.000
29,481.000	29,926.000	38,675.000	37,467.000	42,512.000	39,249.000
20,279.000	23,840.000	26,048.000	27,978.000	27,263.000	25,696.000
9,202.000	6,086.000	12,627.000	9,489.000	15,249.000	13,553.000
4,197.000	5,778.000	9,221.000	5,149.000	4,217.000	4,240.000
5,005.000	308.000	3,406.000	4,340.000	11,032.000	9,313.000
1,247.000	1,319.000	1,461.000	1,566.000	1,446.000	1,118.000
1,397.000	1,159.000	674.000	745.000	617.000	870.000
@CF	-8,945.000	-11,645.000	-3,398.000	0.000	-2,420.000
5,155.000	-8,797.000	-9,026.000	121.000	10,203.000	6,645.000
2,134.000	-810.000	-2,161.000	685.000	4,183.000	2,887.000
@CF	@CF	@CF	@CF	0.000	0.000
3,021.000	-7,987.000	-6,865.000	-564.000	6,020.000	3,758.000
84.000	47.000	0.000	0.000	0.000	0.000
2,937.000	-8,034.000	-6,865.000	-564.000	6,020.000	3,758.000
0.000	0.000	0.000	0.000	0.000	0.000
2,937.000	-8,034.000	-6,865.000	-564.000	6,020.000	3,758.000
0.000	-114.000	1,900.000	-2,263.000	0.000	0.000
0.000	0.000	0.000	0.000	0.000	0.000
2,937.000	-8,148.000	-4,965.000	-2,827.000	6,020.000	3,758.000
1.25	-3.51	-3.01	-0.25	2.63	1.62
1.25	-3.56	-2.17	-1.24	2.63	1.62
1.24	-3.51	-3.01	-0.25	2.61	1.62
1.24	-3.56	-2.17	-1.24	2.61	1.62
1.23	0.00	0.36	0.73	2.63	2.31
@NA	@NA	@NA	@NA	@NA	@NA
0.25	0.40	1.21	1.21	1.21	1.18
2,339.836	2,292.956	2,283.584	2,288.012	2,290.592	2,324.408
2,387.928	2,292.956	2,283.584	2,288.012	2,329.904	2,363.012

## Annual Income Statement - 5 Years (CIS5)

## Description

This report presents five years of income statement data for a single company.

INTEL CORP TICKER: INTC SIC: 3674 GICS: 45205020	ANNUAL INCOME STATEMENT (\$ MILLIONS, EXCEPT PER SHARE)				
	Dec99	Dec98	Dec97	Dec96	Dec95
Sales	29,389.000	26,273.000	25,070.000	20,847.000	16,202.000
Cost of Goods Sold	9,061.000	9,337.000	7,753.000	7,276.000	6,440.000
Gross Profit	20,328.000	16,936.000	17,317.000	13,571.000	9,762.000
Selling, General, & Administrative Expense	6,983.000	5,585.000	5,238.000	4,130.000	3,139.000
Operating Income Before Deprec. Depreciation, Depletion, & Amortization	13,345.000	11,351.000	12,079.000	9,441.000	6,623.000
Operating Profit	10,159.000	8,544.000	9,887.000	7,553.000	5,252.000
Interest Expense	41.000	40.000	36.000	58.000	75.000
Non-Operating Income/Expense	1,502.000	798.000	808.000	439.000	403.000
Special Items	-392.000	-165.000	0.000	0.000	58.000
Pretax Income	11,228.000	9,137.000	10,659.000	7,934.000	5,638.000
Total Income Taxes	3,914.000	3,069.000	3,714.000	2,777.000	2,072.000
Minority Interest	0.000	0.000	0.000	0.000	0.000
Income Before Extraordinary Items & Discontinued Operations	7,314.000	6,068.000	6,945.000	5,157.000	3,566.000
Preferred Dividends	0.000	0.000	0.000	0.000	0.000
Available for Common Savings Due to Common Stock Equivalents	7,314.000	6,068.000	6,945.000	5,157.000	3,566.000
Adjusted Available for Common Extraordinary Items	7,314.000	6,068.000	6,945.000	5,157.000	3,566.000
Discontinued Operations	0.000	0.000	0.000	0.000	0.000
Adjusted Net Income	7,314.000	6,068.000	6,945.000	5,157.000	3,566.000
Earnings Per Share Basic - Excluding Extra Items & Disc Op	1.10	0.91	1.06	0.73	0.50
Earnings Per Share Basic - Including Extra Items & Disc Op	1.10	0.91	1.06	0.73	0.50
Earnings Per Share Diluted- Excluding Extra Items & Disc Op	1.05	0.86	0.97	0.71	0.50
Earnings Per Share Diluted - Including Extra Items & Disc Op	1.05	0.86	0.97	0.71	0.50
EPS Basic from Operations	1.14	0.93	1.06	0.73	0.50
EPS Diluted from Ops	1.09	0.88	0.97	@NA	@NA
Dividends Per Share	0.05	0.03	0.03	0.02	0.02
Com Shares for Basic EPS	6,648.000	6,672.000	6,540.000	7,104.000	7,072.000
Com Shares for Diluted EPS	6,940.000	7,036.000	7,180.000	7,216.000	7,120.000

## Annual Income Statement - 5 Years with Footnotes (CISF)

### Description

This report presents five years of income statement data for a single company. Two-character footnote codes appear to the right of each data value that is affected.

MICROSOFT CORP TICKER: MSFT SIC: 7372 GICS: 45103020	ANNUAL INCOME STATEMENT (\$ MILLIONS, EXCEPT PER SHARE)				
	Jun99	Jun98	Jun97	Jun96	Jun95
Sales	19,747.000 AA	14,484.000 AA	11,358.000	8,671.000	5,937.000
Cost of Goods Sold	2,331.000 BD	669.000 BD	732.000 BD	825.000 BD	650.000 BD
Gross Profit	17,416.000	13,815.000	10,626.000	7,846.000	5,287.000
Selling, General, & Administrative Expense	6,890.000	6,347.000	5,143.000	4,405.000	3,022.000
Operating Income Before Deprec. Depreciation, Depletion, & Amortization	10,526.000	7,468.000	5,483.000	3,441.000	2,265.000
	483.000 ER	528.000 ER	353.000 ER	363.000 ER	227.000 ER
Operating Profit	10,043.000 ER	6,940.000 ER	5,130.000 ER	3,078.000 ER	2,038.000 ER
Interest Expense	0.000	0.000	0.000	0.000	2.000
Non-Operating Income/Expense	1,688.000	473.000	184.000	271.000	177.000
Special Items	160.000	-296.000	0.000	30.000	-46.000
Pretax Income	11,891.000	7,117.000	5,314.000	3,379.000	2,167.000
Total Income Taxes	4,106.000	2,627.000	1,860.000	1,184.000	714.000
Minority Interest	0.000	0.000	@CF	@CF	@CF
Income Before Extraordinary Items & Discontinued Operations	7,785.000	4,490.000	3,454.000	2,195.000	1,453.000
Preferred Dividends	28.000	28.000	15.000	0.000	0.000
Available for Common Savings Due to Common Stock Equivalents	7,757.000	4,462.000	3,439.000	2,195.000	1,453.000
	0.000	0.000	15.000	0.000	0.000
Adjusted Available for Common	7,757.000	4,462.000	3,454.000 BZ	2,195.000	1,453.000
Extraordinary Items	0.000	0.000	0.000	0.000	0.000
Discontinued Operations	0.000	0.000	0.000	0.000	0.000
Adjusted Net Income	7,757.000	4,462.000	3,454.000	2,195.000	1,453.000
Earnings Per Share Basic - Excluding Extra Items & Disc Op	1.54 BJ	0.92 AC	0.66 RA	0.43 RA	0.29 QJ
Earnings Per Share Basic - Including Extra Items & Disc Op	1.54	0.92	0.66	0.43	0.29
Earnings Per Share Diluted - Excluding Extra Items & Disc Op	1.42	0.83	0.66	0.43	0.29
Earnings Per Share Diluted - Including Extra Items & Disc Op	1.42	0.83	0.66	0.43	0.29
EPS Basic from Operations	1.50 NC	0.98 NC	0.66	0.43	0.30
EPS Diluted from Ops	1.39	0.89	@NA	@NA	@NA
Dividends Per Share	0.00	0.00	0.00	0.00	0.00
Com Shares for Basic EPS	5,028.00	4,864.00	5,248.00	5,120.00	5,016.00
Com Shares for Diluted EPS	5,482.00	5,362.00	@NA	@NA	@NA

## Annual Income Statement - 5 Years with Footnotes and Descriptions (CISFDi)

## Description

This report presents five years of income statement data for a single company. Two-character footnote codes appear to the right of each data value that is affected. Descriptions of the codes, items and periods are presented on the next page.

HEWLETT-PACKARD CO		ANNUAL INCOME STATEMENT				
TICKER: HWP		(\$ MILLIONS, EXCEPT PER SHARE)				
SIC: 3570						
GICS: 45202010						
		Oct99	Oct98	Oct97	Oct96	Oct95
Sales		42,370.000 AZ	47,061.000	42,895.000	38,420.000	519.000
Cost of Goods Sold		28,404.000 BD	29,943.000BD	26,763.000 BD	24,202.000 BD	18,875.000BD
Gross Profit		13,966.000	17,118.000	16,132.000	14,218.000	12,644.000
Selling, General, & Administrative Expense		8,962.000	11,148.000	10,237.000	9,195.000	7,937.000
Operating Income Before Deprec. Depreciation, Depletion, & Amortization		5,004.000	5,970.000	5,895.000	5,023.000	4,707.000
Operating Profit		3,688.000	4,101.000	4,339.000	3,726.000	3,568.000
Interest Expense		202.000	235.000	215.000	327.000	206.000
Non-Operating Income/Expense		708.000	485.000	331.000	295.000	270.000
Special Items		0.000	-260.000	0.000	0.000	0.000
Pretax Income		4,194.000	4,091.000	4,455.000	3,694.000	3,632.000
Total Income Taxes		1,090.000	1,146.000	1,336.000	1,108.000	1,199.000
Minority Interest		@CF	@CF	@CF	0.000	0.000
Income Before Extraordinary Items & Discontinued Operations		3,104.000	2,945.000	3,119.000	2,586.000	2,433.000
Preferred Dividends		0.000	0.000	0.000	0.000	0.000
Available for Common		3,104.000	2,945.000	3,119.000	2,586.000	2,433.000
Savings Due to Common Stock Equivalents		0.000	0.000	0.000	0.000	0.000
Adjusted Available for Common		3,104.000	2,945.000	3,119.000	2,586.000	2,433.000
Extraordinary Items		0.000	0.000	0.000	0.000	0.000
Discontinued Operations		387.000	0.000	0.000	0.000	0.000
Adjusted Net Income		3,491.000	2,945.000	3,119.000	2,586.000	2,433.000
Earnings Per Share Basic - Excluding Extra Items & Disc Op		3.08	2.85AC	2.95 QJ	2.46 QJ	2.32 QJ
Earnings Per Share Basic - Including Extra Items & Disc Op		3.46	2.85	2.95	2.46	2.32
Earnings Per Share Diluted- Excluding Extra Items & Disc Op		2.97	2.77	2.95	2.46	2.32
Earning Per Share Diluted - Including Extra Items & Disc Op		3.34	2.77	2.95	2.46	2.32
EPS Basic from Operations		3.08	3.01NR	2.95	2.46	2.32
EPS Diluted from Ops		2.97	2.93	@NA	@NA	@NA
Dividends Per Share		0.64	0.60	0.52	0.44	0.35
Com Shares for Basic EPS		1,009.000	1,034.000	1,057.000	1,052.000	1,052.000
Com Shares for Diluted EPS		1,052.000	1,072.000	@NA	@NA	@NA

HEWLETT-PACKARD CO		ANNUAL INCOME STATEMENT FOOTNOTE DESCRIPTIONS	
<b>Sales</b>	Oct99	AZ	Data excludes discontinued operations
	Oct98		
	Oct97		
	Oct96		
	Oct95		
<b>Cost of Goods Sold</b>	Oct99	BD	Reduced by depreciation (should be allocated to SG&A)
	Oct98	BD	Reduced by depreciation (should be allocated to SG&A)
	Oct97	BD	Reduced by depreciation (should be allocated to SG&A)
	Oct96	BD	Reduced by depreciation (should be allocated to SG&A)
	Oct95	BD	Reduced by depreciation (should be allocated to SG&A)
<b>Selling, General, &amp; Administrative Expense</b>	Oct99		
	Oct98		
	Oct97		
	Oct96		
	Oct95		
<b>Depreciation, Depletion, &amp; Amortization</b>	Oct99		
	Oct98		
	Oct97		
	Oct96		
	Oct95		
<b>Operating Profit</b>	Oct99		
	Oct98		
	Oct97		
	Oct96		
	Oct95		
<b>Interest Expense</b>	Oct99		
	Oct98		
	Oct97		
	Oct96		
	Oct95		
<b>Total Income Taxes</b>	Oct99		
	Oct98		
	Oct97		
	Oct96		
	Oct95		
<b>Adjusted Available for Common</b>	Oct99		
	Oct98		
	Oct97		
	Oct96		
	Oct95		
<b>Earnings Per Share Basic Excluding Extra Items &amp; Disc Operations</b>	Oct99		
	Oct98	AC	Reflects accounting change to conform with FASB 128
	Oct97	QJ	EPS calculation includes common stock equivalents
	Oct96	QJ	EPS calculation includes common stock equivalents
	Oct95	QJ	EPS calculation includes common stock equivalents
<b>EPS Basic from Ops</b>	Oct99		
	Oct98	NR	Statutory rate used in calculation
	Oct97		
	Oct96		

## Quarterly Income Statement (CISQ)

### Description

This report presents six quarters of data for a single company.

WAL-MART STORES		QUARTERLY INCOME STATEMENT					
TICKER: WMT		(\$ MILLIONS, EXCEPT PER SHARE)					
SIC: 5331							
GICS: 25503020							
FY: 1							
	Jul00	Apr00	Jan00	Oct99	Jul99	Apr99	
Sales	46,112.000	42,985.000	51,394.000	40,432.000	38,470.000	34,717.000	
Cost of Goods Sold	36,044.000	33,009.000	39,931.000	31,050.000	29,597.000	26,711.000	
Gross Profit	10,068.000	9,976.000	11,463.000	9,382.000	8,873.000	8,006.000	
Selling, General, & Administrative Expense	7,625.000	7,318.000	7,672.000	6,907.000	6,573.000	5,888.000	
Operating Income Before Deprec. Depreciation, Depletion, & Amortization	@NA 2,658.000	2,658.000	3,791.000	2,475.000	2,300.000	2,118.000	
	@CF 656.000	656.000	763.000	556.000	526.000	530.000	
Operating Profit	2,443.000	2,002.000	3,028.000	1,919.000	1,774.000	1,588.000	
Interest Expense	344.000	330.000	323.000	317.000	191.000	191.000	
Non-Operating Income/Expense	476.000	462.000	475.000	475.000	443.000	412.000	
Special Items	0.000	0.000	0.000	0.000	@CF 0.000	0.000	
Pretax Income	2,575.000	2,134.000	3,180.000	2,077.000	2,026.000	1,809.000	
Total Income Taxes	948.000	785.000	1,178.000	760.000	741.000	662.000	
Minority Interest	31.000	23.000	85.000	18.000	34.000	33.000	
Income Before Extraordinary Items & Discontinued Operations	1,596.000	1,326.000	1,917.000	1,299.000	1,251.000	1,114.000	
Preferred Dividends	0.000	0.000	0.000	0.000	0.000	0.000	
Available for Common	1,596.000	1,326.000	1,917.000	1,299.000	1,251.000	1,114.000	
Savings Due to Common Stock Equivalents	0.000	0.000	0.000	0.000	0.000	0.000	
Adjusted Available for Common	1,596.000	1,326.000	1,917.000	1,299.000	1,251.000	1,114.000	
Extraordinary Items	0.000	0.000	0.000	-198.000	0.000	-198.000	
Discontinued Operations	0.000	0.000	0.000	0.000	0.000	0.000	
Adjusted Net Income	1,596.000	1,326.000	1,917.000	1,101.000	1,251.000	916.000	
Earnings Per Share Basic - Excluding Extra Items & Disc Op	0.36	0.30	0.43	0.29	0.28	0.25	
Earnings Per Share Basic - Including Extra Items & Disc Op	0.36	0.30	0.43	0.25	0.28	0.21	
Earnings Per Share Diluted - Excluding Extra Items & Disc Op	0.36	0.30	0.43	0.29	0.28	0.25	
Earnings Per Share Diluted - Including Extra Items & Disc Op	0.36	0.30	0.43	0.24	0.28	0.20	
EPS Basic from Operations	0.36	0.30	0.43	0.29	0.31	0.25	
EPS Diluted from Ops	0.36	0.30	0.43	0.29	0.31	0.25	
Dividends Per Share	0.06	0.06	0.05	0.05	0.05	0.05	
Com Shares for Basic	4,465.000	4,457.000	4,455.000	4,454.000	4,450.000	4,449.000	
Com Shares for Diluted	4,487.000	4,478.000	4,479.000	4,475.000	4,473.000	4,472.000	



## Quarterly Income Statement with Footnotes (CISQF)

### Description

This report presents six quarters of data for a single company. Two-character footnote codes appear to the right of each data value that is affected.

MINNESOTA MINING & MFG CO TICKER: MMM SIC: 2670 GICS: 20105010 FY: 12		QUARTERLY INCOME STATEMENT (\$ MILLIONS, EXCEPT PER SHARE)					
	Jun00	Mar00	Dec99	Sep99	Jun99	Mar99	
Sales	4,224.000	4,052.000	4,023.000	3,997.000	3,863.000	776.000	
Cost of Goods Sold	2,150.000 BD	2,038.000 BD	1,914.000 BD	2,033.000 BD	2,066.000 BD	1,939.000 BD	
Gross Profit	2,074.000	2,014.000	2,109.000	1,964.000	1,797.000	1,837.000	
Selling, General, & Administrative Expense	1,068.000	1,021.000	1,138.000	979.000	871.000	965.000	
Operating Income Before Deprec Depreciation, Depletion, & Amortization	1,006.000	993.000	971.000	985.000	926.000	872.000	
	229.000	228.000	231.000	220.000	226.000	223.000	
Operating Profit	777.000	765.000	740.000	765.000	700.000	649.000	
Interest Expense	26.000	26.000	26.000	26.000	26.000	31.000	
Non-Operating Income/Expense	6.000	6.000	11.000	7.000	7.000	8.000	
Special Items	0.000	50.000	2.000	-4.000	104.000	0.000	
Pretax Income	757.000	795.000	727.000	742.000	785.000	626.000	
Total Income Taxes	265.000	282.000	256.000	260.000	291.000	225.000	
Minority Interest	22.000	26.000	27.000	23.000	18.000	17.000	
Income Before Extraordinary Items & Discontinued Operations	470.000	487.000	444.000	459.000	476.000	384.000	
Preferred Dividends	0.000	0.000	0.000	0.000	0.000	0.000	
Available for Common Savings Due to Common Stock Equivalents	470.000	487.000	444.000	459.000	476.000	384.000	
	0.000	0.000	0.000	0.000	0.000	0.000	
Adjusted Available for Common Extraordinary Items	470.000	487.000	444.000	459.000	476.000	384.000	
Discontinued Operations	0.000	0.000	0.000	0.000	0.000	0.000	
Adjusted Net Income	470.000	487.000	444.000	459.000	476.000	384.000	
Earnings Per Share Basic - Excluding Extra Items & Disc Op	1.19	1.22	1.11	1.14	1.18	0.95	
Earnings Per Share Basic - Including Extra Items & Disc Op	1.19	1.22	1.11	1.14	1.18	0.95	
Earnings Per Share Diluted- Excluding Extra Items & Disc Op	1.18	1.21	1.10	1.13	1.17	0.95	
Earnings Per Share Diluted - Including Extra Items & Disc Op	1.18	1.21	1.10	1.13	1.17	0.95	
EPS Basic from Operations	1.19	1.14	1.11 NC	1.15	1.04 NC	0.95	
EPS Diluted from Ops	1.18	1.13	1.10	1.14	1.03	0.95	
Dividends Per Share	0.58	0.58	0.56	0.56	0.56	0.56	
Com Shares for Basic EPS	395.600	397.700	400.000	402.100	403.200	402.300	
Com Shares for Diluted EPS	399.200	401.900	404.800	406.800	407.400	405.900	



	Mar97			
	Dec96			
<b>Cost of Goods Sold</b>	Mar98			
	Dec97			
	Sep97			
	Jun97			
	Mar97			
	Dec96			
<b>Selling, General, &amp; Administrative Expense</b>	Mar98			
	Dec97			
	Sep97			
	Jun97			
	Mar97			
	Dec96			
<b>Depreciation, Depletion, &amp; Amortization</b>	Mar98			
	Dec97			
	Sep97			
	Jun97			
	Mar97			
	Dec96			
<b>Interest Expense</b>	Mar98	QA	Net of interest income and/or capitalized interest	
	Dec97	QA	Net of interest income and/or capitalized interest	
	Sep97	QA	Net of interest income and/or capitalized interest	
	Jun97	QA	Net of interest income and/or capitalized interest	
	Mar97	QA	Net of interest income and/or capitalized interest	
	Dec96	QA	Net of interest income and/or capitalized interest	
<b>Total Income Taxes</b>	Mar98			
	Dec97			
	Sep97			
	Jun97			
	Mar97			
	Dec96			
<b>Income Before Extra Items &amp; Disc Operations</b>	Mar98			
	Dec97			
	Sep97			
	Jun97			
	Mar97			
	Dec96			
<b>Adjusted Available for Common</b>	Mar98			
	Dec97			
	Sep97			
	Jun97			
	Mar97			
	Dec96			
<b>Earnings Per Share-Basic Excluding Extra Items &amp; Disc Operations</b>	Mar98			
	Dec97			
	Sep97			
	Jun97			
	Mar97			
	Dec96	QJ	EPS273lculation includes common stock equivalents	
<b>EPS2Basic from Ops</b>	Mar98			
	Dec97			
	Sep97			
	Jun97			
	Mar97			
	Dec96			
	Dec97			
	Sep97			

## Twelve Months Moving Income Statement (CIS12MM)

### Description

This report presents six periods of twelve months moving or the sum of four quarters of data for a single company.

SAFEMWAY INC TICKER: SWY SIC: 5411 GICS: 30101030 FY: 12		TWELVE MONTHS MOVING INCOME STATEMENT (\$ MILLIONS, EXCEPT PER SHARE)					
	Jun00	Mar00	Dec99	Sep99	Jun99	Mar99	
Sales	30,914.094	29,832.996	28,859.898	26,847.797	25,961.797	25,208.094	
Cost of Goods Sold	27,930.094	27,004.094	26,166.395	22,587.594	20,539.995	18,663.997	
Gross Profit	2,984.000	2,828.902	2,693.504	4,260.203	5,421.802	6,544.097	
Selling, General, & Administrative Expense	@CF	@CF	@CF	@CF	@CF	@CF	
Operating Income Before Deprec. Depreciation, Depletion, & Amortization	2,984.000	2,828.899	2,693.500	2,483.900	2,373.200	2,254.200	
	783.100	741.300	695.600	624.100	588.800	558.500	
Operating Profit	2,200.900	2,087.602	1,997.904	1,859.803	1,784.402	1,695.697	
Interest Expense	432.800	398.700	362.200	302.800	278.100	255.400	
Non-Operating Income/Expense	37.000	37.500	38.300	32.300	33.300	32.300	
Special Items	0.000	0.000	0.000	0.000	0.000	0.000	
Pretax Income	1,805.100	1,726.400	1,674.000	1,589.300	1,539.600	1,472.600	
Total Income Taxes	753.600	719.400	703.100	668.600	648.700	624.900	
Minority Interest	@CF	@CF	@CF	@CF	@CF	@CF	
Income Before Extraordinary Items & Discontinued Operations	1,051.500	1,007.000	970.900	920.700	890.900	847.700	
Preferred Dividends	0.000	0.000	0.000	0.000	0.000	0.000	
Available for Common Savings Due to Common Stock Equivalents	1,051.500	1,007.000	970.900	920.700	890.900	847.700	
	0.000	0.000	0.000	0.000	0.000	0.000	
Adjusted Available for Common Extraordinary Items	1,051.500	1,007.000	970.900	920.700	890.900	847.700	
Discontinued Operations	0.000	0.000	0.000	0.000	0.000	0.000	
Adjusted Net Income	1,051.500	1,007.000	970.900	920.700	890.900	847.700	
Earnings Per Share (Primary) - Excluding Extra Items & Disc Op	2.11	2.02	1.95	1.87	1.82	1.74	
Earnings Per Share (Primary) - Including Extra Items & Disc Op	2.11	2.02	1.95	1.87	1.82	1.74	
Earnings Per Share (Fully Diluted) Excluding Extra Items & Disc Op	2.06	1.97	1.89	1.80	1.74	1.66	
Earnings Per Share (Fully Diluted) Including Extra Items & Disc Op	2.06	1.97	1.89	1.80	1.74	1.66	
EPS Basic from Operations	2.11	2.02	1.95	1.87	1.82	1.74	
EPS Diluted from Operations	2.06	1.97	1.89	1.80	1.74	1.66	
Dividends Per Share	0.00	0.00	0.00	0.00	0.00	0.00	
Com Shares for Basic EPS	1,995.800	1,996.000	1,994.400	1,976.000	1,962.000	1,945.699	
Com Shares for Diluted EPS	2,051.000	2,053.500	2,058.400	2,050.500	2,046.500	2,041.699	

## Year-to-Year Percent Change Income Statement (CISG)

### Description

This report presents one year of income statement data for a single company, with each of the four following years shown as a percentage of the previous year.

HEWLETT-PACKARD CO TICKER: HWP SIC: 3570 GICS: 45202010	YEAR TO YEAR PERCENT CHANGE				
	Oct95 (\$ Millions)	Oct96 (%)	Oct97 (%)	Oct98 (%)	Oct99 (%)
Sales	31,519.000	21.89	11.65	9.71	-9.97
Cost of Goods Sold	18,875.000	28.22	10.58	11.88	-5.14
Gross Profit	12,644.000	12.45	13.46	6.11	-18.41
Selling, General, & Administrative Expense	7,937.000	15.85	11.33	8.90	-19.61
Operating Income Before Depreciation, Depletion, & Amortization	4,707.000	6.71	17.36	1.27	-16.18
Depreciation, Depletion, & Amortization	1,139.000	13.87	19.97	20.12	-29.59
Operating Profit	3,568.000	4.43	16.45	-5.49	-10.07
Interest Expense	206.000	58.74	-34.25	9.30	-14.04
Non-Operating Income/Expense	270.000	9.26	12.20	46.53	45.98
Special Items	0.000	@NC	@NC	@NC	100.00
Pretax Income	3,632.000	1.71	20.60	-8.17	2.52
Total Income Taxes	1,199.000	-7.59	20.58	-14.22	-4.89
Minority Interest	0.000	@NC	@CF	@CF	@CF
Income Before Extraordinary Items & Discontinued Operations	2,433.000	6.29	20.61	-5.58	5.40
Preferred Dividends	0.000	@NC	@NC	@NC	@NC
Available for Common Savings Due to Common Stock Equivalents	2,433.000	6.29	20.61	-5.58	5.40
Stock Equivalents	0.000	@NC	@NC	@NC	@NC
Adjusted Available for Common Extraordinary Items	2,433.000	6.29	20.61	-5.58	5.40
Discontinued Operations	0.000	@NC	@NC	@NC	@NC
Adjusted Net Income	2,433.000	6.29	20.61	-5.58	18.54
Earnings Per Share Basic - Excluding Extra Items & Disc Op	2.32	6.26	19.92	-3.39	8.07
Earnings Per Share Basic - Including Extra Items & Disc Op	2.32	6.26	19.92	-3.39	21.40
Earnings Per Share Diluted- Excluding Extra Items & Disc Op	2.32	6.26	19.92	-6.10	7.22
Earnings Per Share Diluted - Including Extra Items & Disc Op	2.32	6.26	19.92	-6.10	20.58
EPS Basic from Operations	2.315	6.26	19.92	2.03	2.33
EPS Diluted from Operations	@NA	@NA	@NA	@NA	1.37
Dividends Per Share	0.35	25.71	18.18	15.38	6.67
Com Shares for Basic EPS	1,052.000	0.000	0.475	-2.176	-2.418
Com Shares for Diluted EPS	@NA	@NA	@NA	@NA	-1.866

## Notes