

## Charts in the Peer Folder

### Chart Name

Debt to Equity vs. Peer Companies (Quartiled)

Earnings Before Depreciation vs. Peer Set

Net Profit Margin vs. Peer Companies (Quartiled)

Return on Assets vs. Peer Set

Return on Average Equity vs. Peer Companies (Quartiled)

Return on Equity vs. Peer Set

### Chart Mnemonic

DEBTEQ

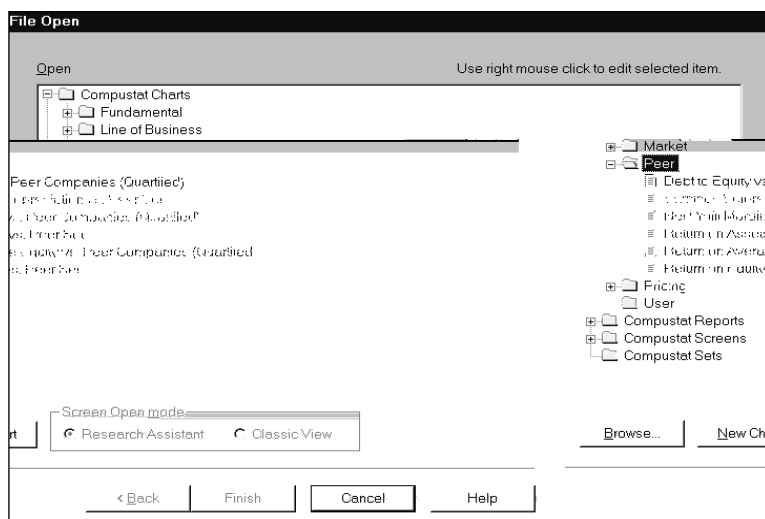
EBITDA

NPM

ROAQ

ROAE

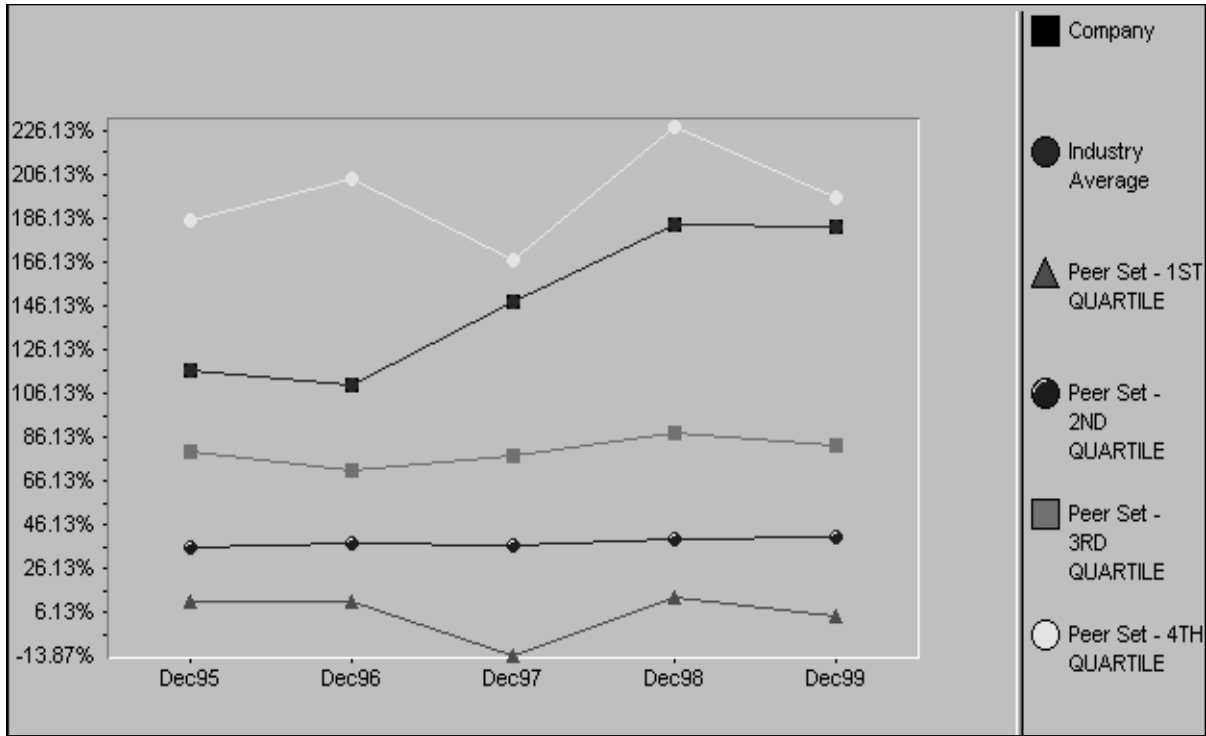
ROEQ



## Debt to Equity vs. Peer Companies (Quartiled) (DEBTEQ)

### Description

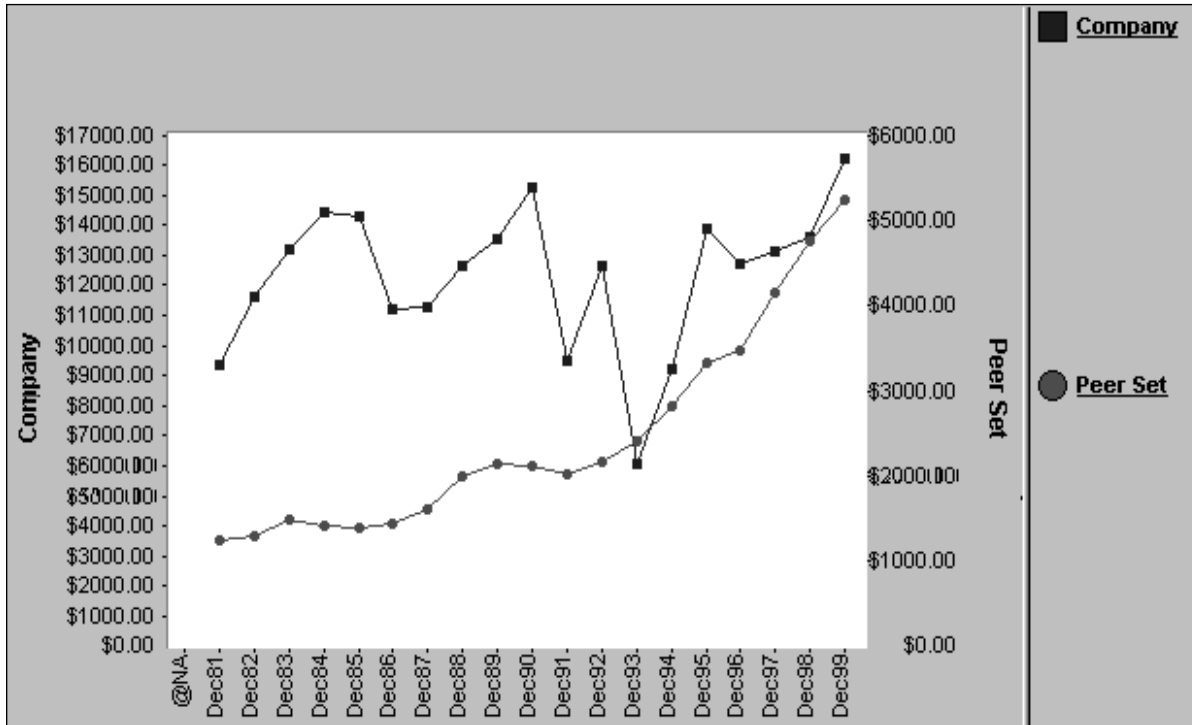
This chart compares a company's debt to equity over five years to a peer set of companies and its quartile averages.



## Earnings Before Depreciation vs. Peer Set (EBITDA)

### Description

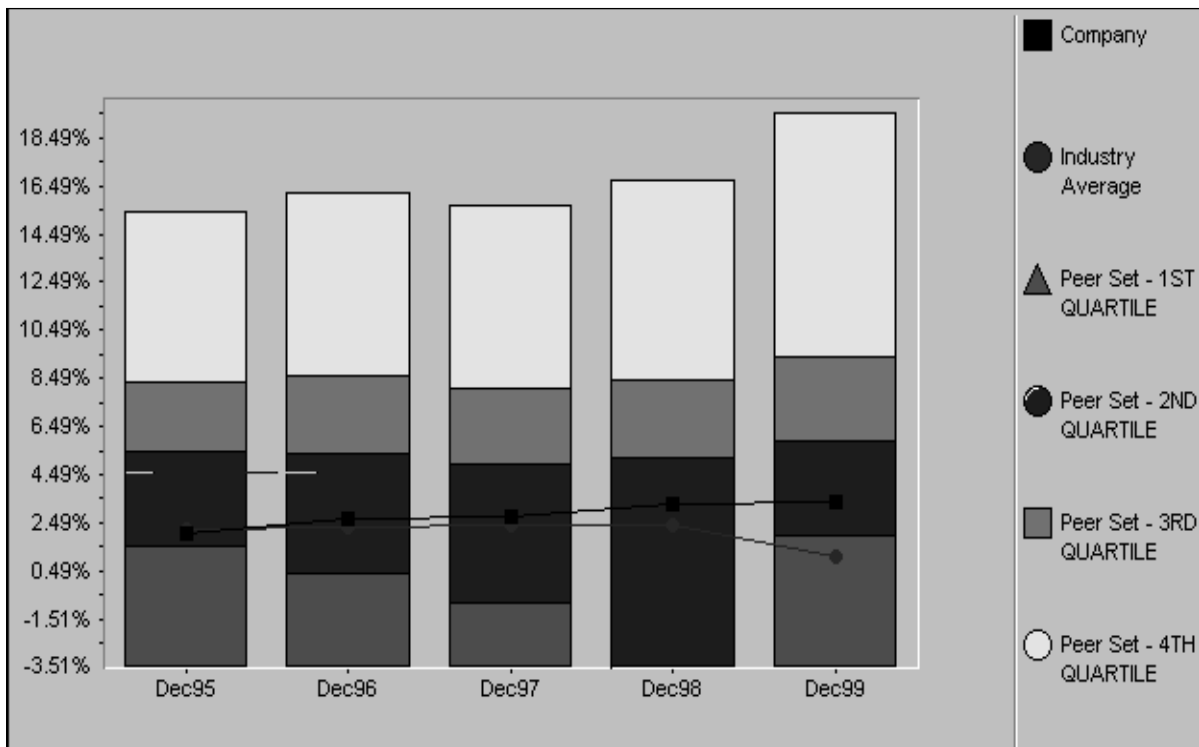
This chart compares earnings before depreciation for a given company to a set of peer companies.



## Net Profit Margin vs. Peer Companies (Quartiled) (NPM)

### Description

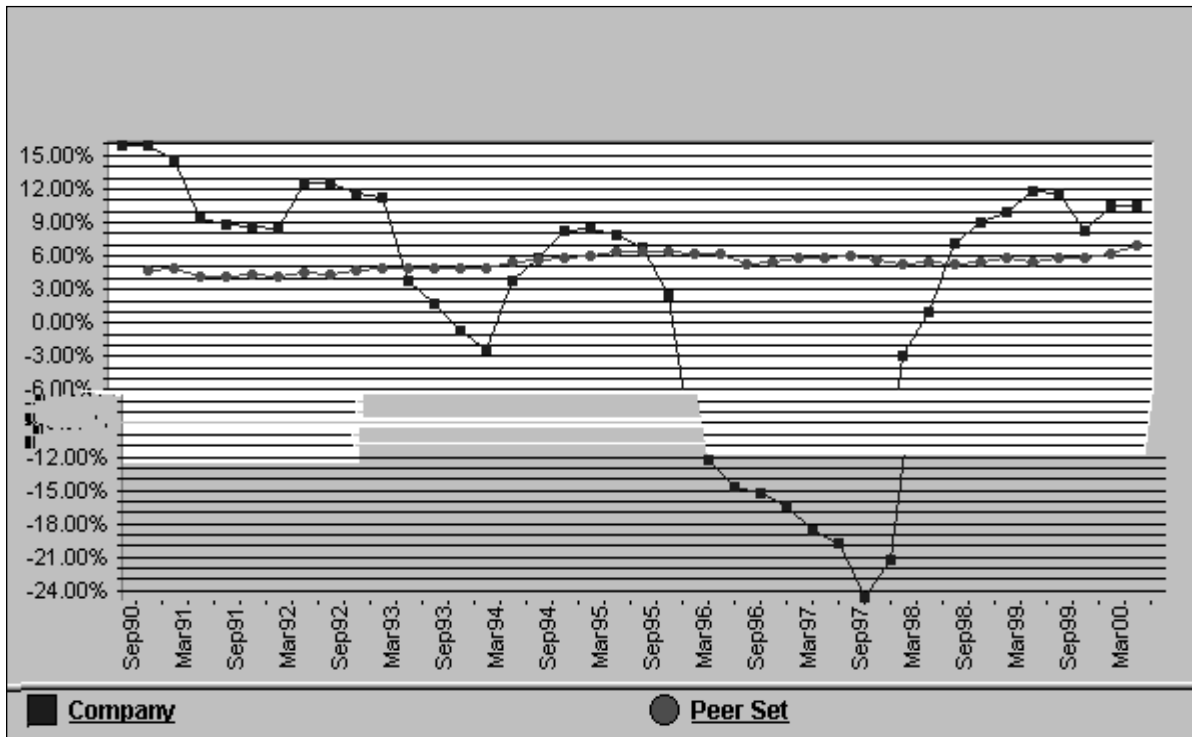
This chart compares a company's debt to equity over five years to a peer set of companies and its quartile averages, except for net profit margin.



## Return on Assets vs. Peer Set (ROAQ)

### Description

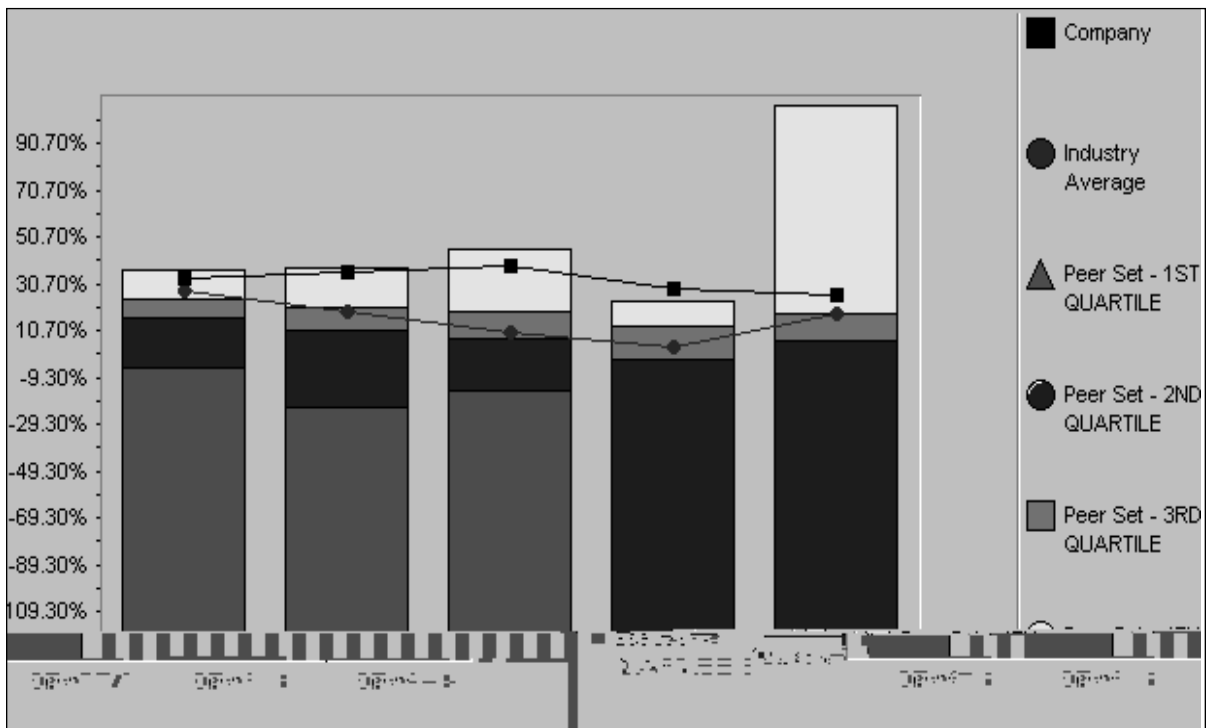
This chart compares the return on assets for a given company to the return on assets for a peer set.



## Return on Average Equity vs. Peer Companies (Quartiled)(ROAE)

### Description

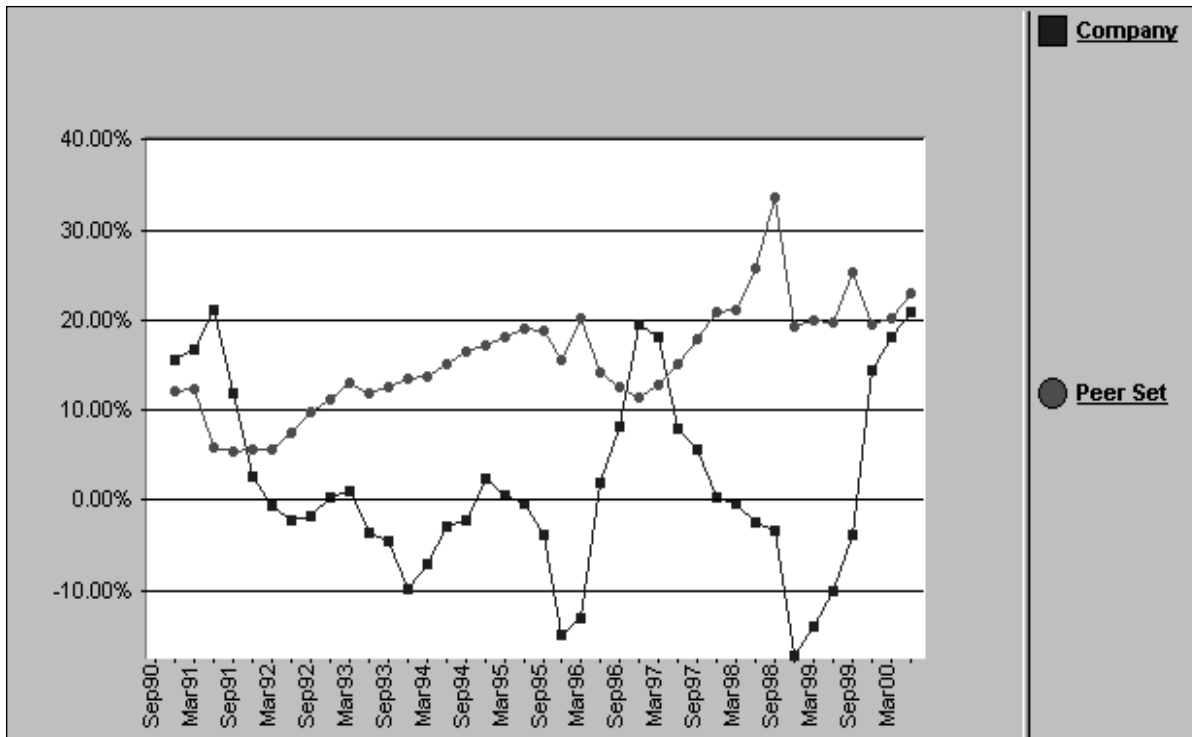
This chart compares the average equity for a given company to the average equity for a quartiled peer set. Each quartile is represented with a different color.



## Return on Equity vs. Peer Set (ROEQ)

### Description

This chart compares the return on equity for a given company to the return on equity for a peer set. The return on equity ratio measures the rate of return earned on the common shareholder's investment.



## Notes