

Charts in the Fundamental Folder

Chart Name

Capital Structure - Quarterly

Comparative Compound Growth - Sales - 5 Year

Gross Profit Margin

Receivables Turnover vs. Sales

Sales vs. Income Before Extra Items

Chart Mnemonic

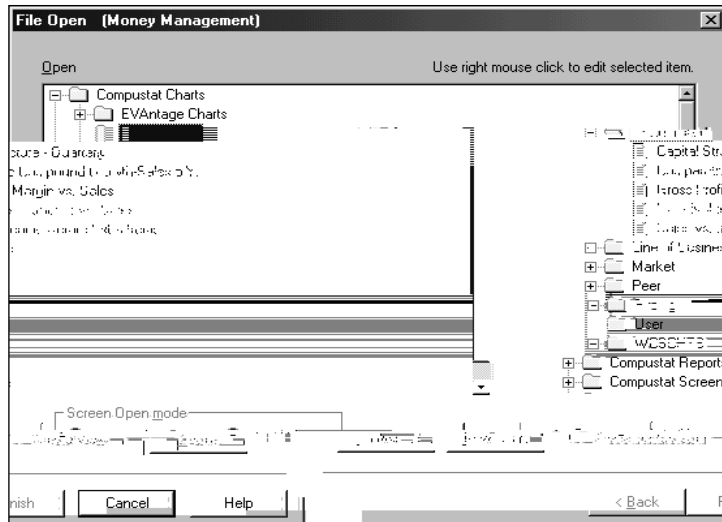
CAPITAL

CSALE5

CGPM

CRTO

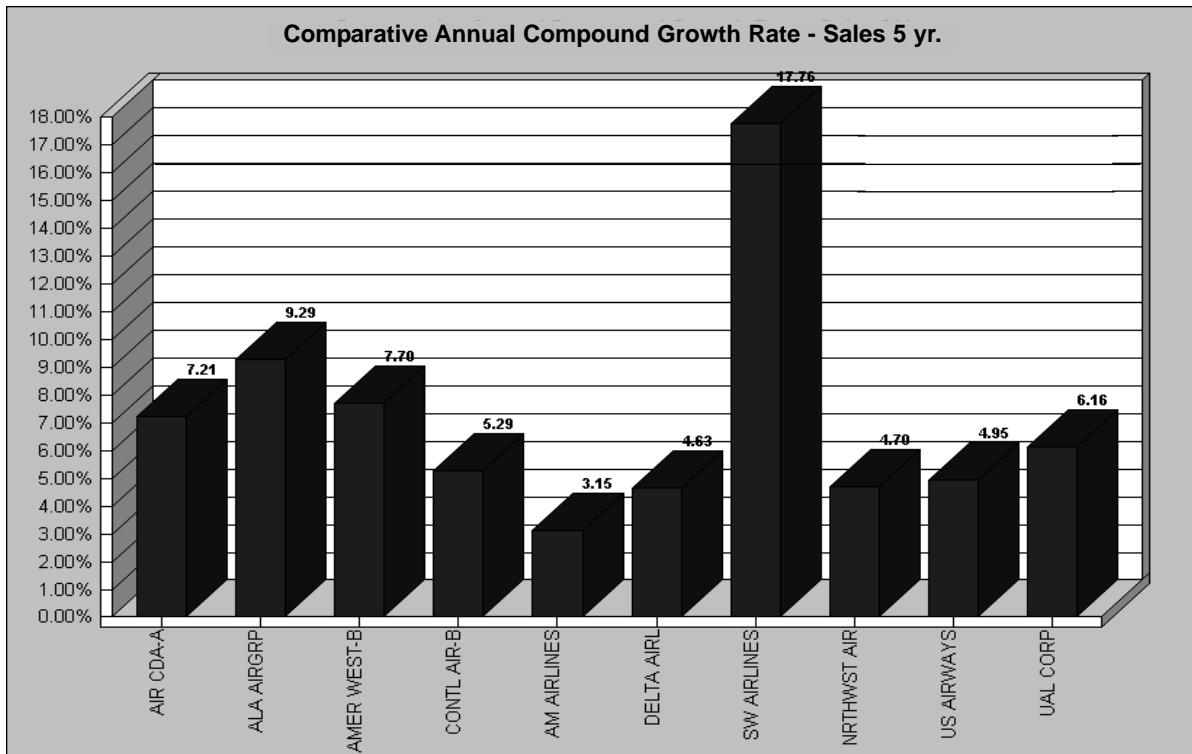
CSALENI



Comparative Compound Growth - Sales 5 Year (CSALE5)

Description

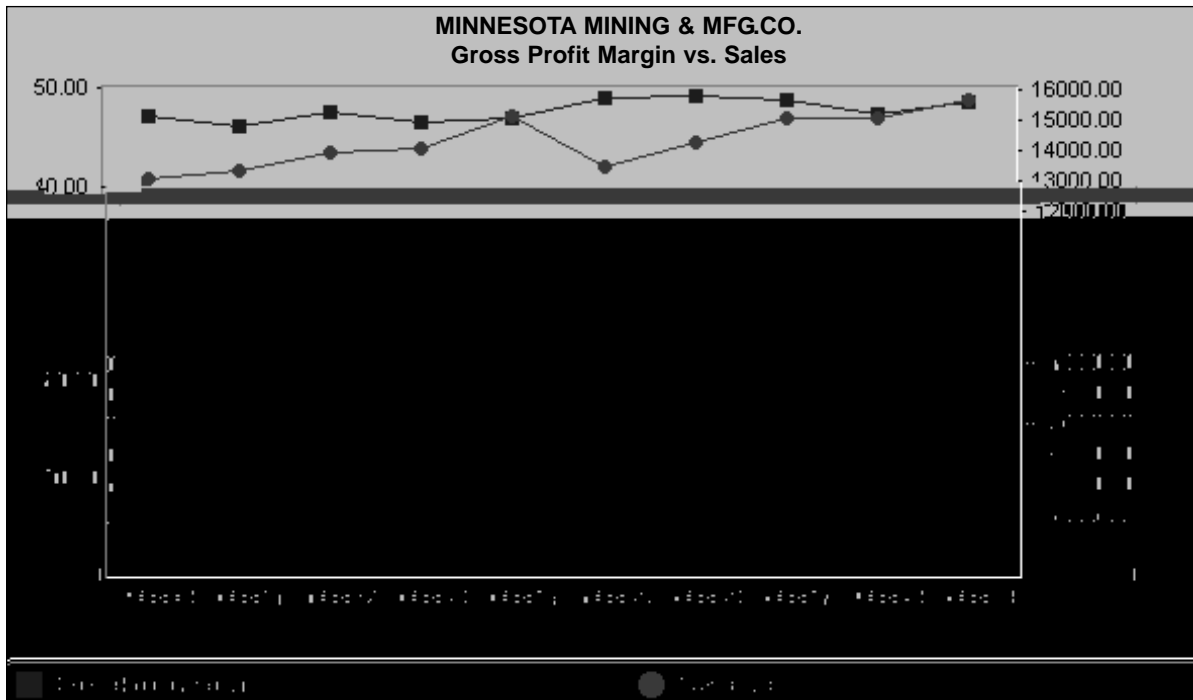
This chart compares the compound growth rates in sales for up to 10 companies.



Gross Profit Margin vs. Sales (CGPM)

Description

This chart compares a company's trend in sales and gross profit margin for the past ten years.



Receivables Turnover vs. Sales (CRTO)

Description

This chart compares a company's trend in receivables turnover to sales for the past ten years.

