
Chapter 12

Standard & Poor's Research Insight and the COMPUSTAT (Global) database offer a world-class research solution for analyzing the global marketplace. The Global database provides

- in-depth financial and market data on more than 12,000 active and inactive companies in more than 70 countries around the world
- complete histories including income statements, balance sheets and market data
- currency files with cross-translation tables for more than 110 currencies
- monthly pricing data on more than 90 local market indexes
- up to 12 years of historical data

This chapter shows you

- how to change your default database
- content that is unique to the Global database


Changing Your Default Database

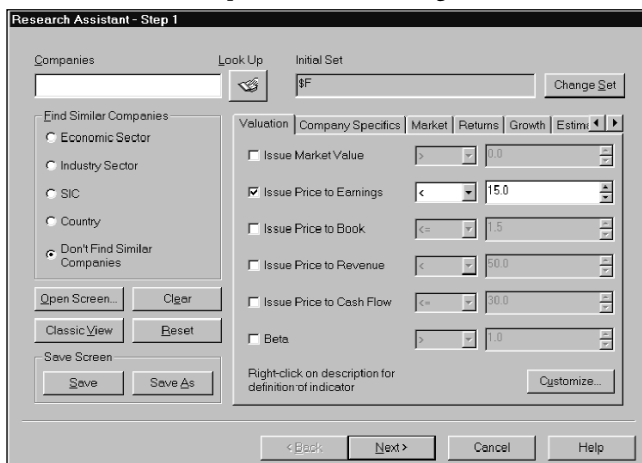
To demonstrate how you can change your default database from North America to Global, let's search for active financial companies in the Global database with issue price to earnings ratios of less than 15%.

Begin from the Research Insight desktop.

1. From the **Databases** menu select **Default Database**.
The Default Database Group dialog box displays.
2. Select **GLOBALVantage** from the drop-down list and click **OK**.

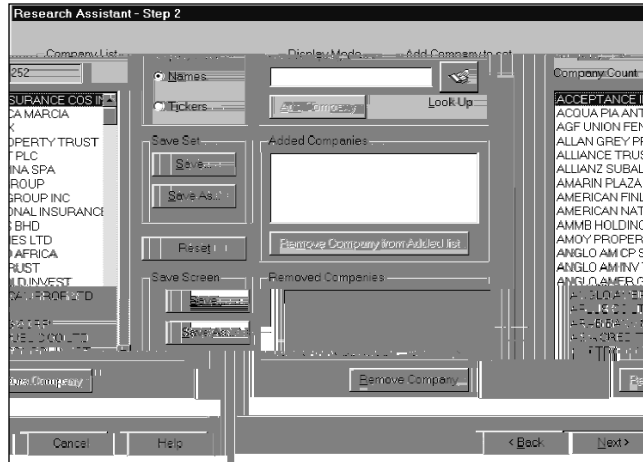


3. Click the  (**Research Assistant**) button.
You will see the Research Assistant - Step 1 window.
4. Click **Change Set**, enter **\$F** in the **Set** field and click **OK**.
This set contains all active financial companies in the COMPUSTAT (Global) database.
5. Select the **Valuation** tab and click the **Issue Price to Earnings** check box.
6. Select **<** from the drop-down list to the right and enter **15** in the far right field.



7. Click **Next**.

The results of your inquiry will appear in the Research Assistant - Step 2 window. From this window you can add or remove tickers, save your set, save your screen or continue to the next window and use your set in a report or chart.



Content Unique to the Global Database

While the software functionality of Research Insight remains constant whether you are using North America or Global data, you will see that some data items, data sets, reports and charts will vary between the two databases. For example, the data items Total Assets and Retained Earnings will appear in Research Insight whether the North America or Global database is activated. However, items such as Foreign Exchange Assets and Resale Agreements will only appear when the Global database is used.

Here's another example of how content may differ between the two databases. These differences are the result of varying financial accounting standards around the world. You can view a current, detailed definition of any data item in the Global database in the on-line help system. Where applicable, these definitions include both industry- and country-specific information.

Other terms that are specific to the Global database include:

GVKEY: The Global Company Key - retrieval key similar to a stock ticker symbol that the Global database uses to identify a company and serve as the primary key. It is also the base of the issue key.

\$Sets: A group of companies, segments, issues or currencies in the Global database. Includes:

\$GI: The set of corresponding issues for active industrial companies.

\$F: The set of financial services companies, including banks and insurance companies available in the Global database.

