
Chapter 13

Daily Updates, Earnings Estimates and Value-Added Data

Research Insight offers a wide variety of data that can be downloaded from the internet and incorporated in the write-to database. The Research Insight Task Scheduler allows you to schedule regular downloads in order to take advantage of the most current data available.

Note to network users: Only Network Administrators should use this feature.

This chapter covers

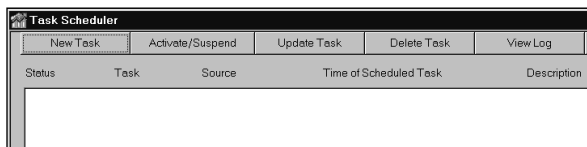
- downloading data from the Internet with the Research Insight Task Scheduler
- additional data available through Internet download
 - Daily Market and Fundamental Data
 - Earnings Estimates
 - Value Added Data
 - Economic Data
 - Historical NAICS
 - Index Fundamentals
 - Insider Trading
 - Institutional Ownership
 - IPO Date
 - Sector Data
 - Short Business Description
 - Value/Growth Indicator

Downloading Data from the Internet

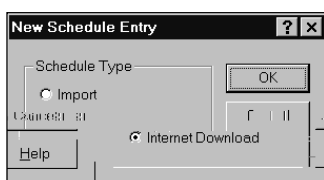
The Research Insight Task Scheduler keeps the COMPUSTAT core database refreshed with current market and fundamental data, earnings estimates, and updates to the Value Added data download. The previous day's data is available for download after 4:00 a.m., EST.

To schedule an Internet download, begin from the Research Insight desktop:

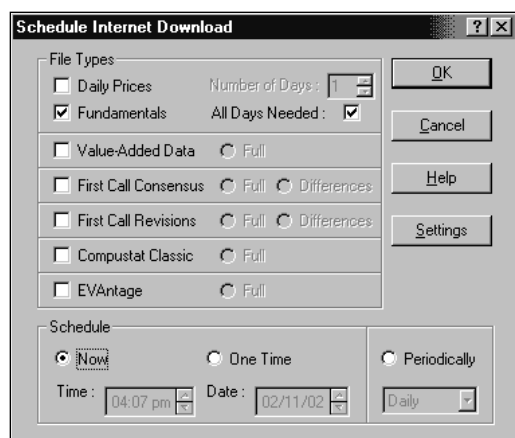
1. From the **Tools** menu, select **Task Scheduler**.
In the Task Scheduler dialog box, Click the **New Task** button.



2. You will see the New Schedule Entry dialog box.
Select the **Internet Download** radio button and click **OK**.



You will see the Schedule Internet Download dialog box.



3. Select the file or files you want to download from the File Types area.
4. Select when you want the file downloaded using the radio buttons in the Schedule area.
Now — The file will be downloaded as soon as you close the Task Scheduler.
One Time — Select the time and date in the fields at the bottom of the dialog box.
Periodically — Select the time of day, start date and frequency (daily/weekly/monthly) in the fields at the bottom of the dialog box.

5. Click **OK**.
You return to the Task Scheduler dialog box. The download you just scheduled appears in alphabetical order in the list of Scheduled Tasks.
6. When you are finished scheduling downloads, close the Task Scheduler dialog box.

Note on downloading multiple files: Research Insight downloads fundamental data first, market data second and FIRST CALL data third. Otherwise, files are downloaded in order according to the time scheduled.

Important: In order to download data, Research Insight must be open.

Additional Data Available

In addition to current core database information, the following additional data is available using the Research Insight Task Scheduler.

Daily Market Data in COMPUSTAT (North America)

To download up to 10 days of stock prices and other daily market data from the internet, select the Daily Prices file type in the Research Insight Task Scheduler. Daily market data requires a separate subscription. For more information please contact your account representative.

COMPUSTAT (North America) Item Name	Mnemonic
Adjustment Factor - Current Date	AFDTE
Adjustment Factor - Current Date Daily	AFDTED
Common Shares Traded - Current	CSHCUR
Common Shares Traded Daily	CSHTRD
Dividend Distribution Type - Ex-Date Daily	DVDIXD
Dividend Distribution Type - Pay-Date Daily	DVDIPD
Dividend Payment Method - Ex-Date Daily	DVMEXD
Dividend Payment Method - Pay-Date Daily	DVMEPD
Dividends Per Share - Ex-Date Daily	DVPSXD
Dividends Per Share - Pay-Date Daily	DVPSPD
Price - Close Daily	PRCCD
Price - Current	PRCCUR
Price - High Daily	PRCHD
Price - Low Daily	PRCLD
Price Status Code Daily	PRCSTD
Total Return Factor - Online	TRFD1

Note: All related Adjustment Factors are automatically downloaded with each Item Group.

Daily Market and Currency Data in COMPUSTAT (Global)

Daily market and currency data for non-North American companies is available in COMPUSTAT (Global) through the Fundamentals Internet download in the Research Insight Task Scheduler. Daily market and currency data requires a separate subscription. For more information please contact your account representative.

Values for daily market and currency data are month-to-date, obtained by rolling the current period forward. For example, yesterday's close price will appear in the monthly slot for the new current month and will be overwritten daily with each new close price downloaded. Where there is no close price for the prior day, the last reported close price will be carried forward to become the month-to-date value.

Monthly Market Items

Iss Adj Fac – Monthly – Ex – Gen

Mnemonic

AJXMI1

Iss Adj Fac – Monthly – Ex – Shr

AJXMI2

Price-High Mnthly

PRCHM

Price-Close Mnthly

PRCCM

Price-Low Mnthly

PRCLM

Com Shares Traded – Mnthly

CSHTRM

Div per Share-Paydate – Mnthly

DVPSPM

Div per Share-Exdate – Mnthly

DVPSXM

ISO Code-Monthly – Market – Iss

ISOMMI

Annual Market Items

Issue Adj Fac-Annual-Ex-Gen

Mnemonic

AJXI1

Issue Adj Fac-Annual-Ex-Sh

AJXI2

Com Shares Outstanding

CSHO

Com Shares-Basic EPS (AR)

CSHPRIA

EPS Basic Exc Extra Itm (AR)

EPSPXA

Scalar Market Items

Internet Download Dt-Annual

Mnemonic

UPDDTA

Internet Download Dt-Monthly

UPDDTM

Internet Download Dt-Daily

UPDDTD

Current Period Daily

CPDD

Current Period Monthly

CPDM

Current Period Annual

CPD

Issue Adj Fac-Scalar-Ex-Gen

AJXS11

Issue Adj Fac-Scalar-Ex-Shr

AJXS12

Scalar Market Items (continued)	Mnemonic
Com Shares Outstanding IS	CSHOIS
Com Shares Outstanding PS	CSHOPS
EPS Basic ExcExtra Itm(AR)IS	EPSPXAIS
EPS Basic ExcExtra Itm(AR)PS	EPSPXAPS
Exchange Listing-Issue	EXCHGI
Inactive Issue Date	INISSD
Inactive Issue Marker	INISS
ISO Code-Fin'l-Issue	ISOFI
Issue Local Mkt Index Ind-1	LMIS1
Issue Local Mkt Index Ind-2	LMIS2
Quoteblock	QUOTEBLK

Currency Translation Rates for Month End/Monthly Average/12 Months Moving Average are downloaded for the following currencies:

Currency	Month End	Monthly Average	12 MM Average
Australian Dollars	XAUDME	XAUDAV	XAUD12
Belgian Francs	XBEFME	XBEFAV	XBEF12
British Pounds	XGBPME	XGBP AV	XGBP12
Canadian Dollars	XCADME	XCADAV	XCAD12
EMU Euro	XEURME	XEURAV	XEUR12
French Francs	XFRFME	XFRFAV	XFRF12
German Marks	XDEMME	XDEMAV	XDEM12
Hong Kong Dollars	XHKDME	XHKDAV	XHKD12
Italian Lira	XITLME	XITLAV	XITL12
Japanese Yen	XJPYME	XJPYAV	XJPY12
Netherlands Guilders	XNLGME	XNLGAV	XNLG12
S. African Rands	XZARME	XZARAV	XZAR12
Spanish Pesetas	XESPME	XESPAV	XESP12
Swedish Kroner	XSEKME	XSEKAV	XSEK12
Swiss Francs	XCHFME	XCHFAV	XCHF12
US Dollars	XUSDME	XUSDAV	XUSD12

Notes:

To enable the currency information download in Research Insight, on the Tools/Options/Currency Translations tab, select the "Use Current Translation Rate" radio button. The daily market data download is supported only for the latest two core database downloads. Market data is adjusted for stock splits. If no pricing information can be obtained during the current month, then the prior month's pricing information will be carried forward.

Daily Fundamental Data

You can download up to 10 days of the most recent COMPUSTAT (North America) and up to 55* days of the most recent Global Income Statement and Balance Sheet data items. Daily fundamental data requires a separate subscription. For more information please contact your account representative. The fundamental data items available on a daily basis are listed below:

Item Name	Mnemonic	North America Data	Global Data
Acceptances Outstanding	ACCO	X	
Accounts Payable	AP	X	X
Accounts Payable Qtly	APQ	X	
Accounts Payable and Accrued Liab - Increase (Decrease)	APALCH	X	
Accounts Payable and Accrued Liab - Increase (Decrease) Qtly	APALCQ	X	
Accts Rec/Debtors - Total	RECT		X
Accts Rec/Debtors - Total-FS	ARTFS		X
Acquisitions - S&U	AQC	X	
Acquisitions - S&U Qtly	AQCQ	X	
AdjFactor - Cum Exdate	AJEX	X	
AdjFactor - Cum Ex Qtly	AJEXQ	X	
AdjFactor - Cum Ex Monthly	AJEXM	X	
Admin & General Expenses - Total	XAGT		X
Amort - Def Policy Acq Costs	ADPAC		X
Appropriations to Untaxed Resvs	AUTXR		X
Assets & Liab - Other Net Chg	AOLOCH	X	
Assets & Liab - Oth Net Chg Qtly	AOLOCQ	X	
Assets - Other	AO	X	X
Assets - Total	AT	X	X
Assets - Total - Interim	ATIS		X
Assets - Total - Preliminary	ATPS		X
Assets-Total Qtly	ATQ	X	
Benefits & Claims - Total	BCT		X
Brok, Clearing & Exchg Fees	BCEF		X
Capital Expenditures	CAPX	X	
Capital Exp (FOF)- Interim	CAPXIS		X
Capital Exp (FOF)- Preliminary	CAPXPS		X
Capital Expenditures Qtly	CAPXQ	X	
Capital Surplus	CAPS		X
Capitalized Costs	CAPCST		X
Cash & Deposits - Segregated	CHS		X
Cash & Due From Banks	CH		X

Item Name	Mnemonic	North America Data	Global Data
Cash & Equivalents	CHE	X	
Cash & Equivalents Qtly	CHEQ	X	
Cash & Equivalents - Incr(Decr) (FOF) - Interim	CHECHIS		X
Cash & Equivalents - Incr (Decr) (FOF) - Preliminary	CHECHPS		X
Cash & Equivalents - Incr(Decr) (Jpn Non) - Interim	CHECHJIS		X
Cash & Equivalents - Incr(Decr) (Jpn Non) - Preliminary	CHECHJPS		X
Cash & ST Investments	CHSTI		X
Cash Dividends	DV	X	
Cash Dividends Qtly	DVQ	X	
Cash Dividends - Preferred	DVP	X	
Cash Dividends - Preferred Qtly	DVPQ	X	
Change in Cash and Equivalents	CHECH	X	
Change in Current Debt	DLCCH	X	
Change in Current Debt Qtly	DLCCHQ	X	
Change in Short-Term Investments	IVSTCH	X	
Change in Short-Term Inv - Qtly	IVSTCQ	X	
Change In Stocks	STKCH		X
Commissions & Fees-Brok/Deal	CFBD		X
Commissions & Fees-Real Est	CFERE		X
Commissions & Fees-Other	CFO		X
Commissions & Fees Paid-Oth	CFPDO		X
Common Shares for Basic EPS	CSHPRI	X	
Common Shares for Basic EPS Qtly	CSHPRQ	X	
Common Shares for Diluted EPS	CSHFD	X	
Common Shares for Dil EPS - Qtly	CSHFDQ	X	
Com Shares Outstanding	CSHO	X	
Com Shares Outstanding - Interim	CSHOIS		X
Com Shares Outstanding - Prelim	CSHOPS		X
Com Shares Outstanding Qtly	CSHOQ	X	
Common Equity - Total (Common/Ordinary Equity)	CEQ	X	X
Common Equity-Total-Qtly	CEQQ	X	
Common Stock	CSTK	X	
Communications Expense	XCOM	X	
Communications Expense - In	XCOMI	X	
Company Name	CONM	X	
Company Website Address	WEBURL	X	
Cost of Goods Sold	COGS	X	X

Item Name	Mnemonic	North America Data	Global Data
Cost of Goods Sold Qtly	COGSQ	X	
CUSIP Number	CUSIP	X	
Cumulative Translation Adj	TRANSA		X
Current Assets - Other	ACO	X	X
Current Assets - Other Qtly	ACOQ	X	
Current Assets - Total	ACT	X	X
Current Assets - Total - Interim	ACTIS		X
Current Assets - Total - Preliminary	ACTPS		X
Current Assets - Total Qtly	ACTQ	X	
Current Liabilities - Other	LCO	X	X
Current Liabilities - Other Qtly	LCOQ	X	
Current Liabilities - Total	LCT	X	X
Current Liabilities - Total - Interim	LCTIS	X	
Current Liabilities - Total - Prelim	LCTPS	X	
Current Liabilities - Total Qtly	LCTQ	X	
Current Period	CPD	X	X
Current Period Qtly	CPDQ	X	
Customers' Acceptances	CA	X	
Debt in Current Liabilities	DLC	X	X
Debt in Current Liab - Interim	DLCIS		X
Debt in Current Liab - Preliminary	DLCPS		X
Debt in Current Liabilities Qtly	DLCQ	X	
Deferred Policy Acq Costs	DFPAC		X
Deferred Taxes - Balance Sheet	TXDB		X
Deferred Taxes - S&U	TXDC	X	
Deferred Taxes - S&U Qtly	TXDCQ	X	
Deferred Taxes & ITC	TXDITC	X	
Deferred Taxes & ITC Qtly	TXDITQ	X	
Deposits - Demand - Customers	DPDC		X
Deposits - Long-Term Time	DPLTB		X
Deposits - Short-Term Demand	DPSTB		X
Deposits - Time - Customers	DPTIC		X
Deposits - Total - Banks	DPTB		X
Deposits - Total - Customers	DPTC		X
Depreciation Of Fixed Assets	DFXA		X
Depreciation Qtly	DPQ	X	
Depreciation - S&U	DPC	X	
Depreciation - S&U Qtly	DPCQ	X	
Depreciation and Amortization	DP	X	X
Depreciation and Amort - Interim	DPIS		X
Depreciation and Amort - Prelim	DPPS		X
Development Revenue - Real Est	DVRRE		X

Item Name	Mnemonic	North America Data	Global Data
Dilution Adjustment	DILADJ	X	
Dilution Adjustment - Qtly	DILADQ	X	
Dilution Available - Excluding	DILAVX	X	
Dilution Available - Excl - Qtly	DILAVQ	X	
Div & Bonus Pd Policyholders	DVPDP		X
Div per Share-Exdate Qtly	DVPSXQ	X	
Dividends - Preferred/Preference	DVP		X
Dividends - Share Capital - Other	DVSCO		X
Dividends - Total	DVT		X
Dividends - Total - Interim	DVTIS		X
Dividends - Total - Preliminary	DVTPS		X
EPS Basic from Operations	OPEPS	X	
EPS Basic from Operations-12MM	OEPS12	X	
EPS Basic from Operations-Qtly	OPEPSQ	X	
EPS Basic Excl Extra Items	EPSPX	X	
EPS Basic Excl Extra Items 12MM	EPSX12	X	
EPS Basic Excl Extra Items Qtly	EPSPXQ	X	
EPS Basic Excl Extra Items (As Reptd) - Interim	EPSPXAIS		X
EPS Basic Excl Extra Items (As Reptd) - Preliminary	EPSPXAPS		X
EPS Basic Incl Extra Items	EPSPI	X	
EPS Basic Incl Extra Items Qtly	EPSPIQ	X	
EPS Diluted from Operations	OPEPSX	X	
EPS Dil from Oper - 12MM	OEPF12	X	
EPS Dil from Oper - 12MM - Qtly	OEPSXQ	X	
EPS Dil Excl Extra - 12MM	EPSF12	X	
EPS Diluted Excl Extra Items	EPSFX	X	
EPS Diluted Excl Extra Items Qtly	EPSFXQ	X	
EPS Diluted Incl Extra Items	EPSFI	X	
EPS Diluted Incl Extra Items Qtly	EPSFIQ	X	
Employees	EMP	X	X
Equity in Net Loss (Earnings)	ESUBC	X	
Equity in Net Loss (Earnings) Qtly	ESUBCQ	X	
Equity Reserves - Total	RVEQT	X	
Exchange Rate Effect	EXRE	X	
Exchange Rate Effect Qtly	EXREQ	X	
Expense-Development-Real Est	XDVRE		X
Expense-Investment-Real Est	XIVRE		X
Expense - Nonint - Bank (Total)	XNITB		X
Expense - Other - Broker/Dealer	XOBD		X

Item Name	Mnemonic	North America Data	Global Data
Expense - Other - Ins	XOI		X
Expense - Other - Real Estate	XORE		X
Expense - Sundry	XS		X
Expense - Total	XT		X
Extraordinary Items	XI		X
Extraordinary Items - Interim	XIIS		X
Extraordinary Items - Preliminary	XIPS		X
Extraordinary Items & Disc Oper	XIDO	X	
Extra Items & Disc Oper Qtly	XIDOQ	X	
Extra Items & Disc Oper - S&U	XIDOC	X	
ExtraItems & DiscOper- S&U Qtly	XIDOCQ	X	
File Code	FCD		X
Financing Activities - Other	FIAO	X	
Financing Activities - Other Qtly	FIAOQ	X	
Financing Act - Net Cash Flow	FINCF	X	
Financing Act - Net Cash Flow Qtly	FINCFQ	X	
Fiscal Year	FYR	X	
Fiscal Year - Interim	FYRIS		X
Fiscal Year - Preliminary	FYRPS		X
Fiscal Year-End Month of Data	FYR		X
Fiscal Year Qtly	FYRQ	X	
Fixed Assets (Tangible) - Tot(Gross)	PPEGT		X
Foreign Currency Adjustment	FCA		X
Foreign Exchange Assets	FEA		X
Foreign Exchange Liabilities	FEL		X
Funds from Operations - Other	FOPO	X	
Funds from Operations - Other Q	FOPOQ	X	
GLOBAL Vantage Key - Interim	GVKEYIS		X
GLOBAL Vantage Key - Prelim	GVKEYPS		X
Goodwill	GDWL		X
Income & Net Income Note	NIF	X	
Income Bef Extra Items	IB	X	X
Income Bef Extra Items - Interim	IBIS		X
Income Bef Extra Items - Prelim	IBPS		X
Income Bef Extra Items Qtly	IBQ	X	
Income Bef Extra Items Qtly Note	IBQF	X	
Income Bef Extra Items - S&U	IBC	X	
Income Bef Extra Items - S&U Qtly	IBCQ	X	
Inc Bef Extra Items - Adj for CSE	IBADJ	X	
Income Bef Extra Items - Adj Qtly	IBADJQ	X	
Income - Nonint - Bank (Total)	INITB		X
Income - Other - Brok/Deal	IOBD		X

Item Name	Mnemonic	North America Data	Global Data
Income - Other - Ins	IOI		X
Income - Other - Real Est	IORE		X
Income Statement Model Number	ISMOD		X
Income Taxes - Accrued - Incr(Decr)	TXACH	X	
Inc Taxes - Accr - Incr(Decr) Qtly	TXACHQ	X	
Income Taxes - Paid	TXPD	X	
Income Taxes - Paid Qtly	TXPDQ	X	
Income Taxes - Payable	TXP	X	
Income Taxes - Payable Qtly	TXPQ	X	
Income Taxes - Total	TXT	X	X
Income Taxes - Total Qtly	TXTQ		X
Increase in Investments	IVCH	X	
Increase in Investments	IVCHQ	X	
Industry Code - Current	SIC		X
Industry Presentation Code	IPCD		X
Insurance Prem - Total - Ins	IPTI	X	
Intangibles	INTAN	X	X
Interest & Div Inc - Total	IDIT		X
Interest & Related Income - Ins	IRII		X
Interest Capitalized	INTC		X
Interest Expense - Total	XINT	X	X
Interest Expense - Total - Interim	XINTIS		X
Interest Expense - Total - Prelim	XINTPS		X
Interest Expense Qtly	XINTQ	X	
Interest Income - Net	NIINT		X
Interest Paid - Net	INTPN	X	
Interest Paid - Net of Cap Interest	INTPNQ	X	
Internet Download Date - Annual	UPDDTA	X	X
Internet Download Date - Qtly	UPDDTQ	X	
Internet Download Date - Scalar	UPDDTS	X	X
Inven/Stocks - Total	INVT	X	
Inventory - Decrease (Incr)	INVCH	X	
Inventory - Decrease (Incr) Qtly	INVCHQ	X	
Inventories - Total	INVT	X	
Inventories - Total Qtly	INVTQ	X	
Invested Capital	ICAPT		X
Investing Activities - Net Cash Flow	IVNCF	X	
Investing Act - Net Cash Flow Qtly	IVNCFQ	X	
Investing Activities - Other	IVACO	X	
Investing Activities - Other Qtly	IVACOQ	X	
Investments & Advances - Equity	IVAEQ	X	X
Investments & Advances - Other	IVAO	X	

Item Name	Mnemonic	North America Data	Global Data
Net Items - Total	NIT		X
Nonoperating Inc (Exp) - Other	NOPIO		X
Nonoperating Inc (Exp) - Total	NOPI	X	X
Nonoperating Inc (Exp) Qtly	NOPIQ	X	
Operating Act - Net Cash Flow	OANCF	X	
Operating Act - Net Cash Flow Qtly	OANCFQ	X	
Operating Expense	XOPR		X
Operating Expense - Other	XOPRO		X
Operating Income	OPINC		X
Op Income Aft Depreciation	OIADP	X	
Op Income Bef Depreciation	OIBDP	X	
Op Income Bef Depreciation Qtly	OIBDPQ	X	
Operating Revenues - Other	OPRO		X
Participation Rights Certifs	PRC		X
Period Duration - Months	PDM		X
Period Duration - Months - Interim	PDMIS		X
Period Duration - Months - Prelim	PDMP		X
Preferred Stock	PSTK	X	X
Preferred Stock Qtly	PSTKQ	X	
Pretax Income	PI	X	X
Pretax Income - Interim	PIIS		X
Pretax Income - Preliminary	PIPS		X
Pretax Income Qtly	PIQ	X	
Primary GICS Code - Current	SPGICX	X	
Primary SIC Code	SIC	X	
Principal Transactions	PTRAN		X
PP&E - Total Net	PPENT	X	X
PP&E - Total Net Qtly	PPENTQ	X	
Provision for Credit Losses	PCL		X
Provision - Other - Net	PVON		X
Provision - Total	PVT		X
Purchase of Common and Pfd Stock	PRSTKC	X	
Purchase of Com and Pfd Stock Qtly	PRSTKQ	X	
Raw Materials, Supplies, Merch	RAWMSM		X
Receivables - Decr (Incr)	RECCH	X	
Receivables - Decr (Incr) - Qtly	RECCHQ	X	
Receivables - Total	RECT	X	
Receivables - Total Qtly	RECTQ	X	
Reduction of Long-Term Debt	DLTR	X	
Reduction of Long-Term Debt Qtly	DLTRQ	X	
Reinsur Assets - Total - Ins	RATI		X
Reinsurance Liab - Total	RLT		X

Item Name	Mnemonic	North America Data	Global Data
Reported Date of Qtly EPS	RDQ	X	
Research & Development	XRD	X	
Research & Development - Qtly	XRDQ	X	
Reserves - Total - Ins	RVTI		X
Reserves - Untaxes	RVUTX		X
Revenue/Income - Sundry	RIS		X
Revenue - Total	REVT		X
Revenue - Total - Interim	REVTIS		X
Revenue - Total - Preliminary	REVTPS		X
S&P Index Code - Current	SPMIX	X	
S&P Industry Code - Current	SPIIX	X	
Sale of Common/Preferred Stock	SSTK	X	
Sale of Common/Preferred Stock Qtly	SSTKQ	X	
Sale of Investments	SIV	X	
Sale of Investments (Qtly)	SIVQ	X	
Sale of Property, Plant and Equipment	SPPE	X	
Sale of Property, Plant and Equip Qtly	SPPEQ	X	
Sale of Property, Plant and Equip & Investments - Loss (Gain)	SPPIV	X	
Sale of Property, Plant and Equip & Investments - Loss (Gain) - Qtly	SPPIVQ	X	
Sales-Net	SALE	X	
Sales - Net Note	SALEF	X	
Sales-Net Qtly	SALEQ	X	
Sales-Net Qtly Note	SALEQF	X	
Sales/Turnover (Net)	SALE		X
S&P Domestic Long-Term Issuer Credit Rating - Current	SPDRC	X	
Sec Borr's & Depos'd by Cust	SBDC		X
Securities In Custody	SC		X
SG&A Expense	XSGA	X	X
SG&A Expense Qtly	XSGAQ	X	
Securities Sold Not Purchased	SSNP		X
Separate Account Assets	SAA		X
Separate Account Liabilities	SAL		X
Share Capital - Other	SCO		X
Shareholders' Equity - Total	SEQ		X
Short-Term Investments - Other	STIO		X
ST Investments - Total	IVST		X
Source Code	SRC	X	X
Source Code - Interim	SRCIS		X

Item Name	Mnemonic	North America Data	Global Data
Source Code - Preliminary	SRCPS		X
Source Code Qtly	SRCQ	X	
Special Items	SPI	X	X
Special Items Qtly	SPIQ	X	
Stockholders' Equity	SEQ	X	
Stockholders' Equity Qtly	SEQQ	X	
Staff Expense - Total	XSTF		X
Ticker Symbol	TIC	X	
Trd/Deal Sec - Gain (Loss)	TDSG		X
Trd/Deal Acct Sec - Total	TDST		X
Treasury Stock - Total	TSTK		X
Update Code	UPD	X	X
Update Code - Interim	UPDIS		X
Update Code - Preliminary	UPDPS		X
Update Code Quarterly	UPDQ	X	
Working Capital/Cash/Net Funds Change - Total - Interim	WCAPTIS		X
Working Capital/Cash/Net Funds Change - Total - Preliminary	WCAPTPS		X

* These items can be downloaded daily, but are updated with the weekly core database.

* Although up to 55 days of daily fundamental data for Global subscribers can be downloaded, fundamental data older than the previous month-end date would be incorporated into the Research Insight (Global) database.

Earnings Estimates Data

FIRST CALL and I/B/E/S (Institutional Brokers Estimate System), our two powerful estimates databases, deliver top analysts' earnings expectations and related financial data, fully integrated with Standard & Poor's Research Insight for easy comparisons of recent and expected performance. An additional subscription is required to access FIRST CALL and I/B/E/S data.

FIRST CALL Data

The FIRST CALL database, provided by FIRST CALL Quantitative Services, contains daily consensus earnings estimates, analysts' recommendations, and related investment information from more than 170 contributing firms.

Estimates are provided for two quarters and two fiscal years of consensus earnings estimate data, expected report dates, consensus recommendations, future growth rates, earnings surprise data, operating actual earnings and P/E ratios. The FIRST CALL database also contains earnings estimate consensus trends and estimate revision momentum data to help you compare recent performance to expected performance.

FIRST CALL subscribers can download daily FIRST CALL data from the Internet through the Task Scheduler. Updated data is available after 2:00 a.m. MST.

This database is available with a separate subscription agreement.

I/B/E/S Data

The Institutional Brokers Estimate System (I/B/E/S) is a database of earnings expectations obtained from more than 2,500 security analysts on over 5,000 companies. Earnings forecast information is received continuously from contributing research departments worldwide. I/B/E/S data researchers review the data and subject it to rigorous validity controls before it is allowed to be entered into the database.

Current estimates (most recent available) are updated weekly. Monthly estimates are updated the third week of the month. The data is available on Research Insight as of the subsequent month-end production. Estimates from each of the previous six months are presented for current year, next year, current quarter and next quarter.

I/B/ES data is integrated within the Research Insight core database.

This database is available with a separate subscription agreement.

Value-Added Data Download

The Value-Added Data Download offers current data updates of daily and index fundamentals, Insider, and Institutional, Economic, Sector and a variety of additional items to all Research Insight clients through an Internet download.

Economic Data

U.S. and Canadian economic data provides you with critical economic indicators and macroeconomic statistics. All economic concepts are presented as monthly figures for up to 20 years. These concepts or their components are provided by *DRI WEA*. As the respective government agencies revise historical statistics, we also update Research Insight to reflect those changes.

Economic data is updated on a weekly basis.

The economic data items in Research Insight are:

U.S. Economic Data

Mnemonic	Item
CAPAPM	Capital Asset Pricing Model
CPI	Consumer Price Index - All Urban - All Items
EMPLOY	Employment - Nonfarm
FEDFUNDS	Federal Funds Rate
BOND20YR	Government Bonds - 20 Year
BOND30YR	Government Bonds - 30 Year
NOTE2YR	Government Notes - 2 Year
NOTE3YR	Government Notes - 3 Year
NOTE5YR	Government Notes - 5 Year
NOTE7YR	Government Notes - 7 Year
NOTE10YR	Government Notes - 10 Year
GDP	Gross Domestic Product
HOUSE	Housing Starts
INFLATN	Inflation Rate
LIBOR1M	LIBOR 1 Month
LIBOR2M	LIBOR 2 Month
MKTIND	Market Indicator
M1	Money Supply (M1)
M2	Money Supply (M2)
PRIME	Prime Interest Rate
PPI	Producer Price Index - Finished Goods - All Items
RTLSALES	Retail Sales - Total

AUTO	Sale of Passenger Cars
TBILL1M	Treasury Bill - 1 Month
TBILL2M	Treasury Bill - 2 Month
TBILL3M	Treasury Bill - 3 Month
TBILL6M	Treasury Bill - 6 Month
TBILL12M	Treasury Bill - 12 Month
UNEMP	Unemployment Rate

Canadian Economic Data

Mnemonic	Item
CAUTO	Sale of Passenger Cars - Canada
CBOND10YR	Government Bonds 10 Year and Over - Canada
CBOND30YR	Government Bonds - 30 Year - Canada
CCPI	Consumer Price Index - All Items - Canada
CEMPLOY	Employment - Canada
CGDP	Gross Domestic Product - Canada
CHOUSE	Housing Starts (Units) - Canada
CNOTE10YR	Government Notes - 10 Year - Canada
CNOTE5YR	Government Notes - 5 Year - Canada
CIPPI	Industrial Product Price Index - Canada
CPRIME	Prime Interest Rate - Canada
CRAWMAT	Raw Material Price Index - Canada
CRTLSALES	Retail Sales - Total - Canada
CTBILL12M	Treasury Bill - 12 Month - Canada
CTBILL3M	Treasury Bill - 3 Month - Canada
CUNEMP	Unemployment Rate - Canada

Historical NAICS

NAICS is a 6-digit coding system for classifying establishments on a production/process-oriented basis.

Following is an example of the NAICS code hierarchy:

Sector	51	Information
Subsector	513	Broadcasting & Telecommunications
Industry Group	5133	Telecommunications
NAICS Industry	51332	Wireless Telecomm. Carriers except Satellite
National	513321	Paging

Historical NAICS is included in your basic Research Insight subscription. See the Reference section of Research Insight on-line help for a complete list of NAICS codes.

Index Fundamentals

Index Fundamentals integrates S&P Index data with Research Insight, allowing you to create benchmarks to compare to your target companies and to search out industries that are high performers. Data includes fundamental financial data (i.e. Sales, Cost of Goods Sold, etc.), per share data and ratios for the S&P Indexes. Values are pre-calculated by taking an item for each of the companies in an S&P Major Index or S&P Industry Index, summing that value and dividing this number by S&P's base Divisor.

The index fundamental data items are listed below, along with the type of calculation:

Balance Sheet

Data Item	Mnemonic	Type of Calculation
-----------	----------	---------------------

Data Item	Mnemonic	Type of Calculation
Less Treasury Stock - Annual	TSTK	Non-Share Item
Less Treasury Stock - Quarterly	TSTKQ	Non-Share Item
Long Term Debt - Annual	DLTT	Non-Share Item
Long Term Debt - Quarterly	DLTTQ	Non-Share Item
Minority Interest - Annual	MIB	Non-Share Item
Minority Interest - Quarterly	MIBQ	Non-Share Item
Net PP&E - Annual	PPENT	Non-Share Item
Net PP&E - Quarterly	PPENTQ	Non-Share Item
Notes Payable - Annual	NP	Non-Share Item
Other Assets - Annual	AO	Non-Share Item
Other Assets - Quarterly	AOQ	Non-Share Item
Other Current Assets - Annual	ACO	Non-Share Item
Other Current Assets - Quarterly	ACOQ	Non-Share Item
Other Current Liabilities - Annual	LCO	Non-Share Item
Other Current Liabilities - Quarterly	LCOQ	Non-Share Item
Other Liabilities - Annual	LO	Non-Share Item
Other Liabilities - Quarterly	LOQ	Non-Share Item
Retained Earnings - Annual	RE	Non-Share Item
Retained Earnings - Quarterly	REQ	Non-Share Item
Shares Outstanding - Annual	CSHO	Per-Share Item *
Shares Outstanding - Quarterly	CSHOQ	Per-Share Item *
Stockholders Equity - Annual	SEQ	Non-Share Item
Stockholders Equity - Quarterly	SEQQ	Non-Share Item
Total Assets - Annual	AT	Non-Share Item
Total Assets - Quarterly	ATQ	Non-Share Item
Total Current Assets - Annual	ACT	Non-Share Item
Total Current Assets - Quarterly	ACTQ	Non-Share Item
Total Current Liabilities - Annual	LCT	Non-Share Item
Total Current Liabilities - Quarterly	LCTQ	Non-Share Item
Total Liabilities - Annual	LT	Non-Share Item
Total Liabilities - Quarterly	LTQ	Non-Share Item
Total Preferred Stock - Annual	PSTK	Non-Share Item
Total Preferred Stock - Quarterly	PSTKQ	Non-Share Item
Total Receivables - Annual	RECT	Non-Share Item
Total Receivables - Quarterly	RECTQ	Non-Share Item

* This value is set to 1.0000 for all records; all index items are on a per share basis. As a result, this item is being set to 1.0000 for per share concepts in Research Insight.

Income Statement

Data Item	Mnemonic	Type of Calculation
\$ Savings-Common Stock Equivalents - Annual	CSTKE	Non-Share Item
\$ Savings-Common Stock Equivalents - Quarterly	CSTKEQ	Non-Share Item
Cost of Goods Sold - Annual	COGS	Non-Share Item
Cost of Goods Sold - Quarterly	COGSQ	Non-Share Item
Depreciation - Annual	DP	Non-Share Item
Depreciation - Quarterly	DPQ	Non-Share Item
Earnings Per Share (Basic) Excluding Extra Items - Annual	EPSPX	Per-Share Item
Earnings Per Share (Basic) Excluding Extra Items-Quarterly	EPSPXQ	Per-Share Item
Earnings Per Share (Basic) from Operations - Annual	OPEPS	Per-Share Item
Earnings Per Share (Basic) from Operations - Quarterly	OPEPSQ	Per-Share Item
Earnings Per Share (Basic) Including Extra Items - Annual	EPSPI	Per-Share Item
Earnings Per Share (Basic) Including Extra Items -Quarterly	EPSPIQ	Per-Share Item
Income Available for Common - Annual	IBCOM	Non-Share Item
Income Available for Common - Quarterly	IBCOMQ	Non-Share Item
Income Before Extraordinary Items - Annual	IB	Non-Share Item
Income Before Extraordinary Items - Quarterly	IBQ	Non-Share Item
Income Before Extraordinary Items & Discontinued Operations - Adjusted for CSE - Annual	IBADJ	Non-Share Item
Income Before Extraordinary Items & Discontinued Operations - Adjusted for CSE - Quarterly	IBADJQ	Non-Share Item
Income Taxes - Annual	TXT	Non-Share Item
Income Taxes - Annual	TXT	Non-Share Item
Interest Expense - Annual	XINT	Non-Share Item
Interest Expense - Quarterly	XINTQ	Non-Share Item
Minority Interest - Annual	MII	Non-Share Item
Minority Interest - Quarterly	MIIQ	Non-Share Item
Net Income - Annual	NO	Non-Share Item
Net Income - Quarterly	NOQ	Non-Share Item
Nonoperating Expense - Annual	NOPI	Non-Share Item
Nonoperating Expense - Quarterly	NOPIQ	Non-Share Item

Data Item	Mnemonic	Type of Calculation
Operating Income Before Depreciation - Annual	OIBDT	Non-Share Item
Operating Income Before Depreciation - Quarterly	OIBDTQ	Non-Share Item
Operating Profit - Annual	OIADP	Non-Share Item
Operating Profit - Quarterly	OIADPQ	Non-Share Item
Preferred Dividends - Annual	DVP	Non-Share Item
Preferred Dividends - Quarterly	DVPQ	Non-Share Item
Pretax Income - Annual	PI	Non-Share Item
Pretax Income - Quarterly	PIQ	Non-Share Item
Sales - Annual	SALE	Non-Share Item
Sales - Quarterly	SALEQ	Non-Share Item
Selling, General, & Administrative Expense - Annual	XSGA	Non-Share Item
Selling, General, & Administrative Expense - Quarterly	XSGAQ	Non-Share Item
Special Items - Annual	SPI	Non-Share Item
Special Items - Quarterly	SPIQ	Non-Share Item

Cash Flow

Data Item	Mnemonic	Type of Calculation
Capital Expenditures - Annual	CAPX	Non-Share Item
Capital Expenditures - Quarterly	CAPXQ	Non-Share Item
Cash Dividends - Annual	DV	Non-Share Item
Cash Dividends - Quarterly	DVQ	Non-Share Item
Depreciation and Amortization - Annual	DPC	Non-Share Item
Depreciation and Amortization - Quarterly	DPCQ	Non-Share Item
Financing Activities - Net Cash Flow - Annual	FINCF	Non-Share Item
Financing Activities - Net Cash Flow - Quarterly	FINCFQ	Non-Share Item
Investing Activities - Net Cash Flow - Annual	IVNCF	Non-Share Item
Investing Activities - Net Cash Flow - Quarterly	IVNCFQ	Non-Share Item
Operating Activities - Net Cash Flow - Annual	OANCF	Non-Share Item
Operating Activities - Net Cash Flow - Quarterly	OANCFQ	Non-Share Item
Sale of Common and Preferred Stock - Annual	SSTK	Non-Share Item

Data Item	Mnemonic	Type of Calculation
Sale of Common and Preferred Stock - Quarterly	SSTKQ	Non-Share Item
Sale of Property, Plant, and Equipment - Annual	SPPE	Non-Share Item
Sale of Property, Plant, and Equipment - Quarterly	SPPEQ	Non-Share Item
Ratios		
Data Item	Mnemonic	Type of Calculation
Average Collection Period - Annual	COLLECT	Weighted Average Ratio
Average Collection Period - Quarterly	COLLECTQ	Weighted Average Ratio
Current Ratio - Annual	CR	Weighted Average Ratio
Current Ratio - Quarterly	CRQ	Weighted Average Ratio
Days to Sell Inventory (Days) - Annual	SELLINV	Weighted Average Ratio
Days to Sell Inventory (Days) - Quarterly	SELLINVQ	Weighted Average Ratio
Debt to Total Assets (%) - Annual	DAT	Weighted Average Ratio
Debt to Total Assets (%) - Quarterly	DATQ	Weighted Average Ratio
Debt to Total Capital (%) - Annual	DTCAP	Weighted Average Ratio
Data Item	Mnemonic	Type of Calculation
Debt to Total Capital (%) - Quarterly	DTCAPQ	Weighted Average Ratio
Debt to Total Equity (%) - Annual	DETQ	Weighted Average Ratio
Debt to Total Equity (%) - Quarterly	DETQQ	Weighted Average Ratio
Dividend Payout - Annual	DVPOR	Weighted Average Ratio
Dividend Yield - Annual	DVYD	Weighted Average Ratio
Gross Operating Margin - Annual	GPM	Weighted Average Ratio
Gross Operating Margin - Quarterly	GPMQ	Weighted Average Ratio
Interest Coverage After Tax - Annual	ICBT	Weighted Average Ratio
Interest Coverage After Tax - Quarterly	ICBTQ	Weighted Average Ratio
Interest Coverage Before Tax - Annual	IC	Weighted Average Ratio
Interest Coverage Before Tax - Quarterly	ICQ	Weighted Average Ratio
Inventory Turnover - Annual	INVX	Weighted Average Ratio
Inventory Turnover - Quarterly	INVXQ	Weighted Average Ratio
Operating Cycle (Days) - Annual	OPCYCLE	Weighted Average Ratio
Operating Cycle (Days) - Quarterly	OPCYCLEQ	Weighted Average Ratio
Price to Book - Annual	MKBK	Weighted Average Ratio
Price to Earnings - Annual	PE	Weighted Average Ratio
Price to Earnings - Quarterly	PEQ	Weighted Average Ratio
Profit Margin (%) - Annual	NPM	Weighted Average Ratio
Profit Margin (%) - Quarterly	NPMQ	Weighted Average Ratio

Data Item

Quick Ratio - Annual
 Quick Ratio - Quarterly
 Receivables Turnover- Annual
 Receivables Turnover- Quarterly
 Return on Average Assets - Annual
 Return on Average Assets - Quarterly
 Return on Average Equity - Annual
 Return on Average Equity - Quarterly
 Return on Average Investment - Annual
 Return on Average Investment - Quarterly
 Return on Equity - Annual
 Return on Equity - Quarterly
 Return on Investment - Annual
 Return on Investment - Quarterly
 Return on Total Assets (%) - Annual
 Return on Total Assets (%) - Quarterly
 Total Asset Turnover - Annual
 Total Asset Turnover - Quarterly

Mnemonic

QR
 QRQ
 RECX
 RECXQ
 ROAA
 ROAAQ
 ROAE
 ROAEQ
 ROAI
 ROAIQ
 ROE
 ROEQ
 ROI
 ROIQ
 ROA
 ROAQ
 ATT
 ATTQ

Type of Calculation

Weighted Average Ratio
 Weighted Average Ratio
 Weighted Average Ratio
 Weighted Average Ratio
 Weighted Average Ratio
 Weighted Average Ratio
 Weighted Average Ratio
 Weighted Average Ratio
 Weighted Average Ratio
 Weighted Average Ratio
 Weighted Average Ratio
 Weighted Average Ratio
 Weighted Average Ratio
 Weighted Average Ratio
 Weighted Average Ratio
 Weighted Average Ratio
 Weighted Average Ratio
 Weighted Average Ratio
 Weighted Average Ratio
 Weighted Average Ratio

Miscellaneous

Data Item

S&P Index - Number of Companies Annually
 S&P Index - Number of Companies Quarterly
 S&P Index - % of Equity Updated Annually
 S&P Index - % of Equity Updated Quarterly

Mnemonic

SPNOA
 SPNOQ
 SPEQA
 SPEQQ

Type of Calculation

N/A
 N/A
 Weighted Average Ratio
 Weighted Average Ratio

Insider Trading

Insider Trading data includes

- Top Ten Buys, Top Ten Sells
- Aggregate data
- Open market transactions of 100 or more shares
- Rolling 12 months of data history; updated monthly
- Issue-level data
- Available through Internet daily download

Institutional Ownership

Institutional data includes:

- Top Ten Buys, Top Ten Sells, Top Ten Changes, and Top Ten Holders.
- Aggregate data
- 4 quarters of data stored as monthly items; updated weekly
- Issue-level data
- Available through Internet daily download

IPO Date

This item is the date of a company's initial public stock offering. This item is useful in historical price analyses and in screening a population.

Sector Data

Sector data enables you to benchmark company performance against broad economic and industry sectors. Economic Sector Codes categorize every active and inactive company in the database into one of nine broad economic groups. The Industry Sector Codes further refine each classification into a more specific industry group.

When you download sector data, the following data items in Research Insight are updated:

Mnemonic	Item
ECNSEC	Current Economic Sector
ECNSECH	Historical Economic Sector
SECTOR	Current Industry Sector
SECTORH	Historical Industry Sector

Sector data can be downloaded from the Internet using the Task Scheduler.

Sector data is included in your basic Research Insight subscription. For a complete list Sector Codes and descriptions, refer to the Reference section of Research Insight on-line help.

Short Business Description

This is a brief textual description of a company's business operations. This item can be accessed through an Internet download of the Value Added database.

Value/Growth Indicator

This item compares a company's price-to-book ratio to the median price-to-book ratio for its industry sector.